

Getting to Know Your Stormwater Permits

County of San Diego
Operations Center
Hearing Room

APRIL 14, 2026



Agenda



- 01 Welcome, Introduction and Speaker Bios
- 02 MS4 Permit
- 03 Construction General Permit (CGP)
- 04 Other Common Permits or Requirements

- 05 Questions and Answers
- 06 Post-Seminar Survey
- 07 Networking Event

Welcome!



Jayne Janda-Timba PE, CGP-TOR, QSD, QSP, QISP

- Principal at RICK, co-manages the Water Resources Division
- Stormwater industry expert with over 36 years of experience
- CASQA-qualified Trainer of Record (TOR)
- Co-Chair of APWA SD/Imperial County Stormwater Committee
- Proud Second Generation SDSU Aztec
- jjanda-timba@rickengineering.com

(619) 688-1448



Kris Eckert PE, QSD, QSP

- Senior Civil Engineer with City of San Diego Stormwater Department
- Currently oversees project management and design of Stormwater CIP projects for channel restoration, pipeline replacement, green infrastructure and pump station projects
- Over 22 years of experience; half in private sector and half in the public sector
- Proud Cal Poly SLO Mustang
- keckert@sanidiego.gov

(619) 993-7213

Speaker Lineup – MS4



**Andrea
Vega**

PE, QSD, QSP
WATER RESOURCES ENGINEER

LATITUDE 33 PLANNING AND
ENGINEERING
andrea.vega@latitude33.com
619-947-5236



**Stephanie
Gaines**

PROJECT MANAGER
WATERSHED PROTECTION
PROGRAM

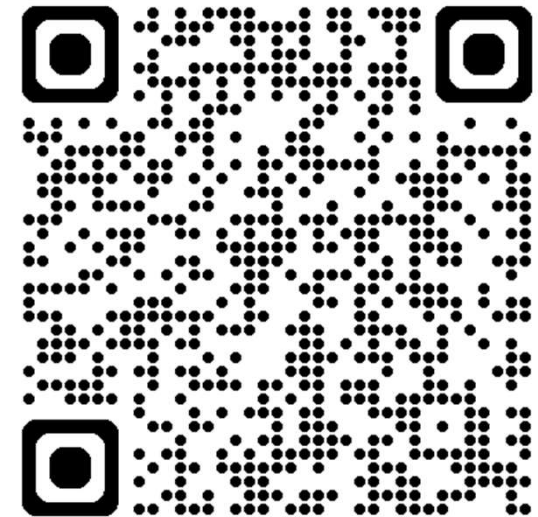
COUNTY OF SAN
DIEGO
Stephanie.Gaines@sdcounty.ca.gov
619-964-8337



**Ash
Paranthaman**

PE, QSD, QSP
ASSOCIATE PROJECT MANAGER

RICK
aparanthaman@rickengineering.com
949-537-9053



**Scan the QR Code for
Speaker Bios**

Speaker Lineup – Construction General Permit



**Miguel
Avalos**

CIVIL ENGINEER

ATKINSREALIS

Miguel.Avalos@atkinsrealis.com

626-324-6610



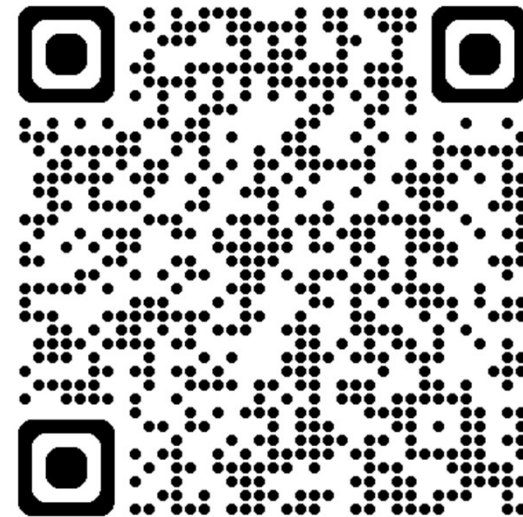
**Jayne
Janda-Timba**

PE, CGP-TOR, QSD, QSP, QISP
PRINCIPAL

RICK

[Jjanda-
timba@rickengineering.com](mailto:Jjanda-timba@rickengineering.com)

619-540-6855



**Scan the QR Code for
Speaker Bios**

Speaker Lineup - Other Permits and Requirements



**Nicole
Rieger**

PE, CFM, QSD
PRINCIPAL ENGINEER

DUDEK

nrieger@dudek.com

760-479-4148



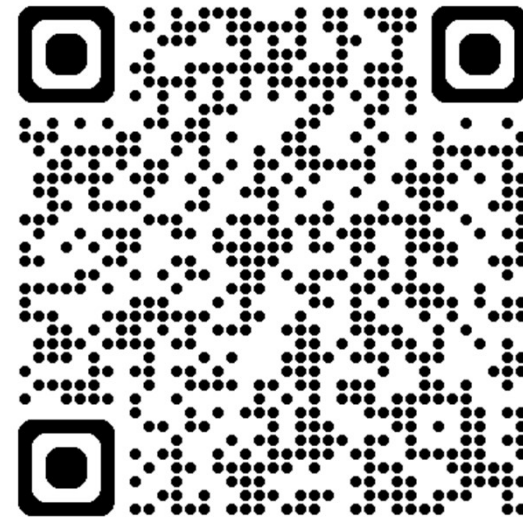
**Scott
Cartwright**

PE
SENIOR ENGINEER

CR ASSOCIATES

scartwright@cramobility.com

858-408-5183



***Scan the QR Code for
Speaker Bios***

MS4 Permit

Presented by:

Ash Paranthaman PE, QSD, QSP
RICK

Stephanie Gaines
County of San Diego

Andrea Vega PE, QSD, QSP
Latitude 33

MS4 Permit Overview



Regulatory Framework

Stormwater is Regulated

Other Stormwater Permits

Stormwater Requirements

Regional and State Coordination

The Acronym

What does the acronym MS4 stand for?

Municipal
Separate
Storm &
Sewer
System

Storm Drains:

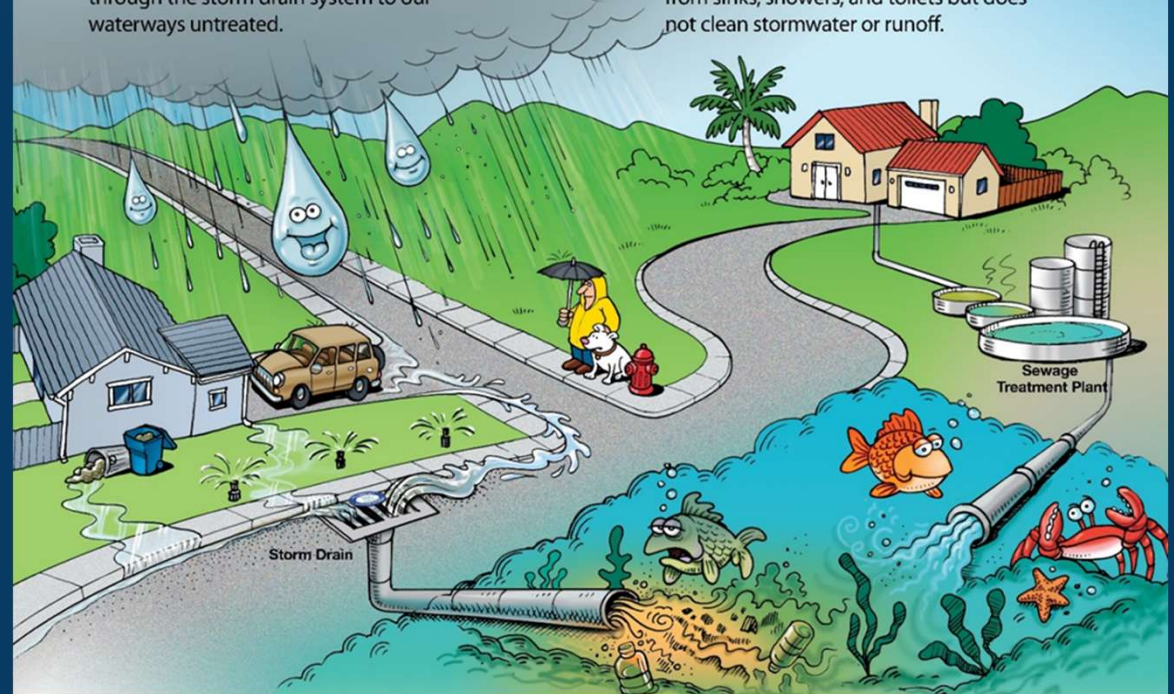
Untreated Runoff

Stormwater and irrigation runoff carry pollution through the storm drain system to our waterways untreated.

Sewer System:

Treated Wastewater

The sanitary sewer system treats wastewater from sinks, showers, and toilets but does not clean stormwater or runoff.



Terminology



- **NPDES Permit** – National Pollutant Discharge Elimination System
- **WQIP** – Water Quality Improvement Plan
- **SWQMP** – Storm Water Quality Management Plan
- **JRMP** – Jurisdictional Runoff Management Plan (Program)
- **BMP** – Best Management Practice(s)
- **TMDL** – Total Maximum Daily Load
- **PDP** – Priority Development Project
- **SDP** – Standard Development Project
- **Copermittees** – Agencies Regulated Under the MS4 Permit

Order No. R9-2013-0001
As amended by Order No. R9-2015-0001
and Order No. R9-2015-0100

C-1

Amended February 11, 2015
Amended November 18, 2015

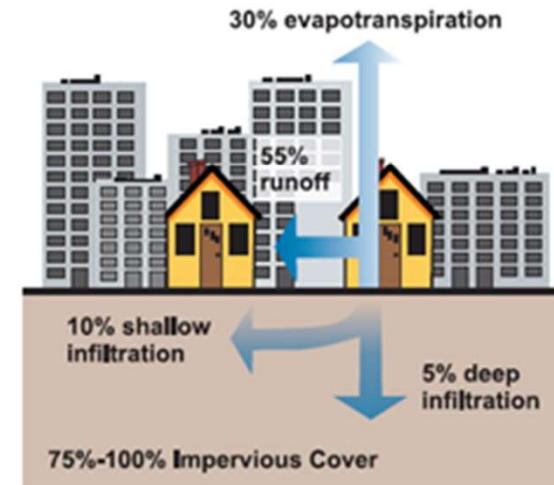
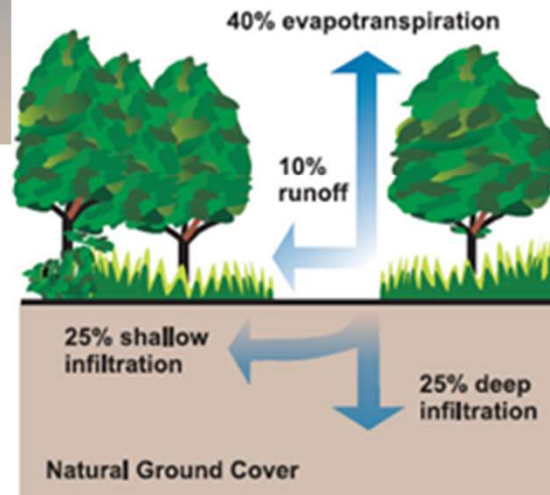
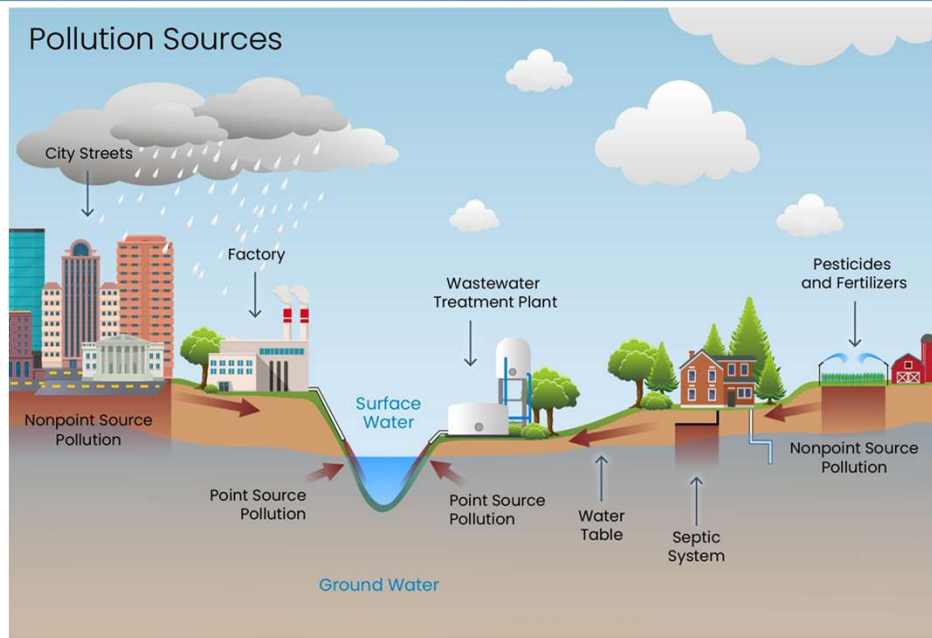
ATTACHMENT C

ACRONYMS AND ABBREVIATIONS

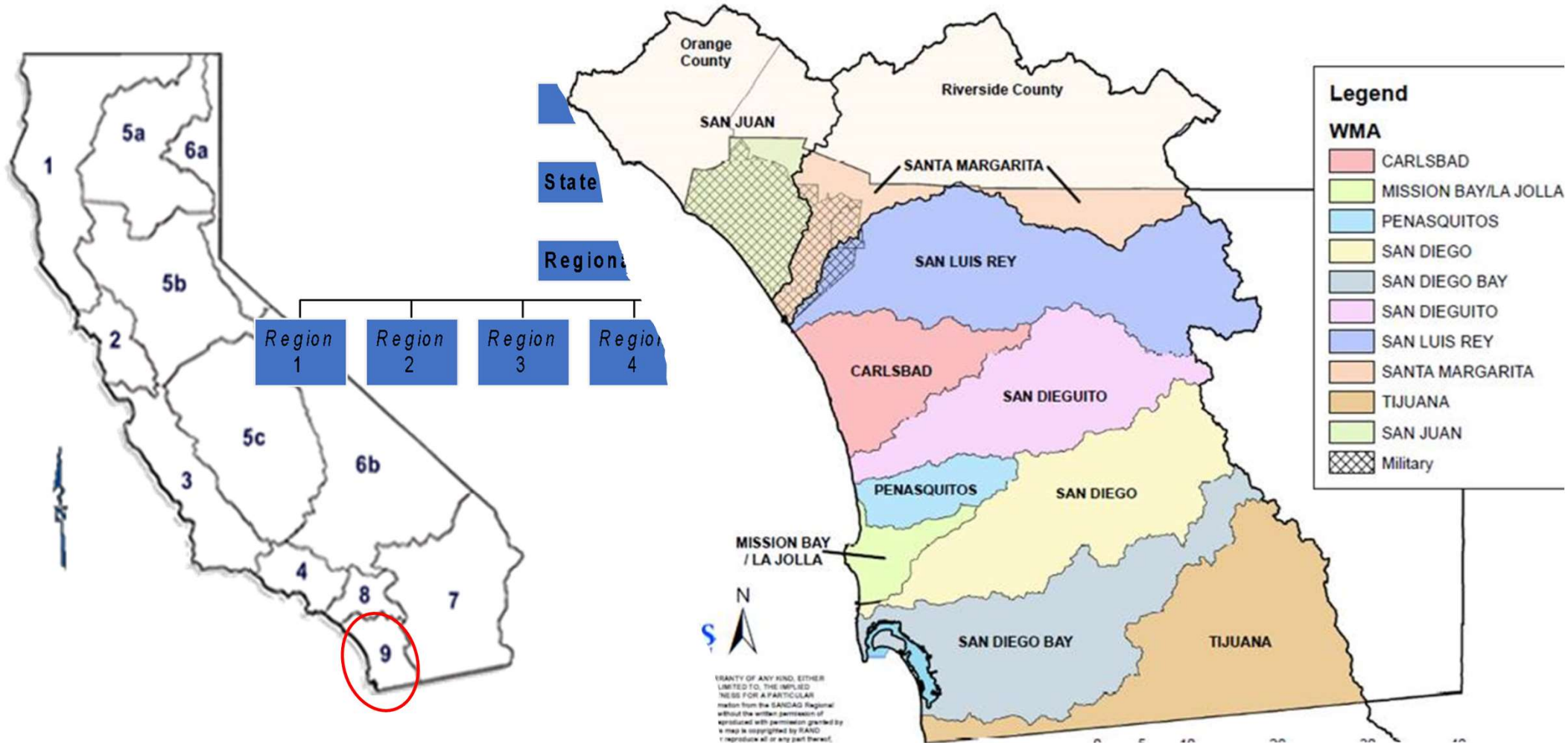
AMAL	Average Monthly Action Level
ASBS	Area(s) of Special Biological Significance
BMP	Best Management Practice
Basin Plan	Water Quality Control Plan for the San Diego Basin
CEQA	California Environmental Quality Act
CCR	California Code of Regulations
CFR	Code of Federal Regulations
CWA	Clean Water Act
CWC	California Water Code
CZARA	Coastal Zone Act Reauthorization Amendments of 1990
ESAs	Environmentally Sensitive Areas
GIS	Geographic Information System
IBI	Index of Biological Integrity
LID	Low Impact Development

Stormwater Is Regulated

Point vs. Non-Point Source Pollution



Regulatory Framework



San Diego Regional Phase 1 Permit Timeline



First Term -
1990

Second Term -
1995

Third Term -
2001

Fourth Term -
2007

Fifth Term -
2013
Regional
Permit



Anti-Backsliding Policy

When MS4 permits are reissued new effluent limitations, standards, or conditions must be at least as stringent as the previous permit.

Key Players

Regional Water Quality Control Board

- San Diego, Region 9

39 Copermittees

- San Diego County:

- Carlsbad
- Chula Vista
- Coronado
- Del Mar
- El Cajon
- Encinitas
- Escondido
- Imperial Beach
- La Mesa
- Lemon Grove
- National City
- Oceanside
- Poway
- San Diego
- San Marcos
- Santee
- Solana Beach
- Vista
- San Diego Unified Port District
- San Diego Regional Airport Authority

- Orange County: 10 cities plus Orange County Flood Control District

- Riverside County: 2 cities plus Riverside County Flood Control and Water Conservation District

**CALIFORNIA REGIONAL WATER QUALITY CONTROL BOARD
SAN DIEGO REGION**

ORDER NO. R9-2013-0001,
AS AMENDED BY ORDER NOS. R9-2015-0001 AND R9-2015-0100
NPDES NO. CAS0109266

**NATIONAL POLLUTANT DISCHARGE ELIMINATION SYSTEM (NPDES) PERMIT
AND WASTE DISCHARGE REQUIREMENTS FOR
DISCHARGES FROM THE MUNICIPAL SEPARATE STORM SEWER SYSTEMS (MS4s)
DRAINING THE WATERSHEDS WITHIN THE SAN DIEGO REGION**

The San Diego County Copermittees in Table 1a are subject to waste discharge requirements set forth in this Order.

Table 1a. San Diego County Copermittees

City of Carlsbad	City of Oceanside
City of Chula Vista	City of Poway
City of Coronado	City of San Diego
City of Del Mar	City of San Marcos
City of El Cajon	City of Santee
City of Encinitas	City of Solana Beach
City of Escondido	City of Vista
City of Imperial Beach	County of San Diego
City of La Mesa	San Diego County Regional Airport Authority
City of Lemon Grove	San Diego Unified Port District
City of National City	

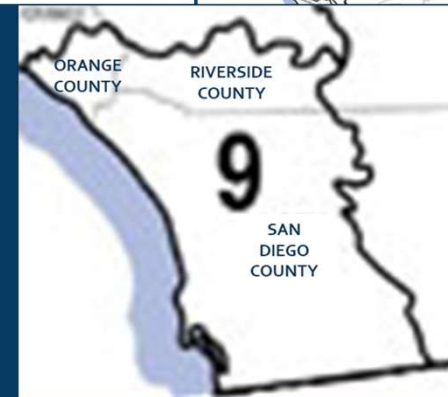
The Orange County Copermittees in Table 1b are subject to waste discharge requirements set forth in this Order.

Table 1b. Orange County Copermittees¹

City of Aliso Viejo	City of Rancho Santa Margarita
City of Dana Point	City of San Clemente
City of Laguna Beach	City of San Juan Capistrano
City of Laguna Hills	City of Laguna Woods
City of Laguna Niguel	County of Orange
City of Mission Viejo	Orange County Flood Control District

¹ While not listed in Table 1b, the City of Lake Forest remains a Copermittee under this Order until the later effective date of this Order or the effective date of Santa Ana Water Board Tentative Order No. R8-2015-0001. Thereafter, the City of Lake Forest will no longer be considered a Copermittee under this Order because its Phase I MS4 discharges will be regulated by the Santa Ana Water Board pursuant to Water Code section 13228 designation. The requirements of this Order that apply to the City of Lake Forest for the duration of this Order, however, are described in Finding 29 and Footnote 2 to Table B-1.

COVER
Page 1 of 2



What's in the Permit?

- **Findings**
 - Legal and technical justification for the permit
- **Provisions**
 - Outcomes based approach:
 - Ensure discharges are controlled
 - Create Plans to identify priorities, goals, strategies & schedules for compliance
 - Required monitoring, inspections, outreach and enforcement
 - Reporting & Fiscal Requirements
- **Attachments (Fact Sheets)**
 - Define compliance requirements, terminology, & technical justifications for stormwater pollution controls

TABLE OF CONTENTS

FINDINGS	
Jurisdiction	1
Discharge Characteristics and Runoff Management.....	3
Water Quality Standards.....	6

Order No. R9-2013-0001
As amended by Order No. R9-2015-0001
and Order No. R9-2015-0100

Amended February 11, 2015
Amended November 18, 2015

TABLE OF CONTENTS (Cont'd)


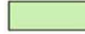


II. PROVISIONS (Cont'd)	
F. Reporting	125
1. Water Quality Improvement Plans	125
2. Updates	128
3. Progress Reporting.....	130
4. Regional Clearinghouse	134
5. Report of Waste Discharge.....	136
6. Reporting Provisions	136
G. Principal Watershed Copermittee Responsibilities.....	137
H. Modification of Order.....	138
I. Standard Permit Provisions and General Provisions	139

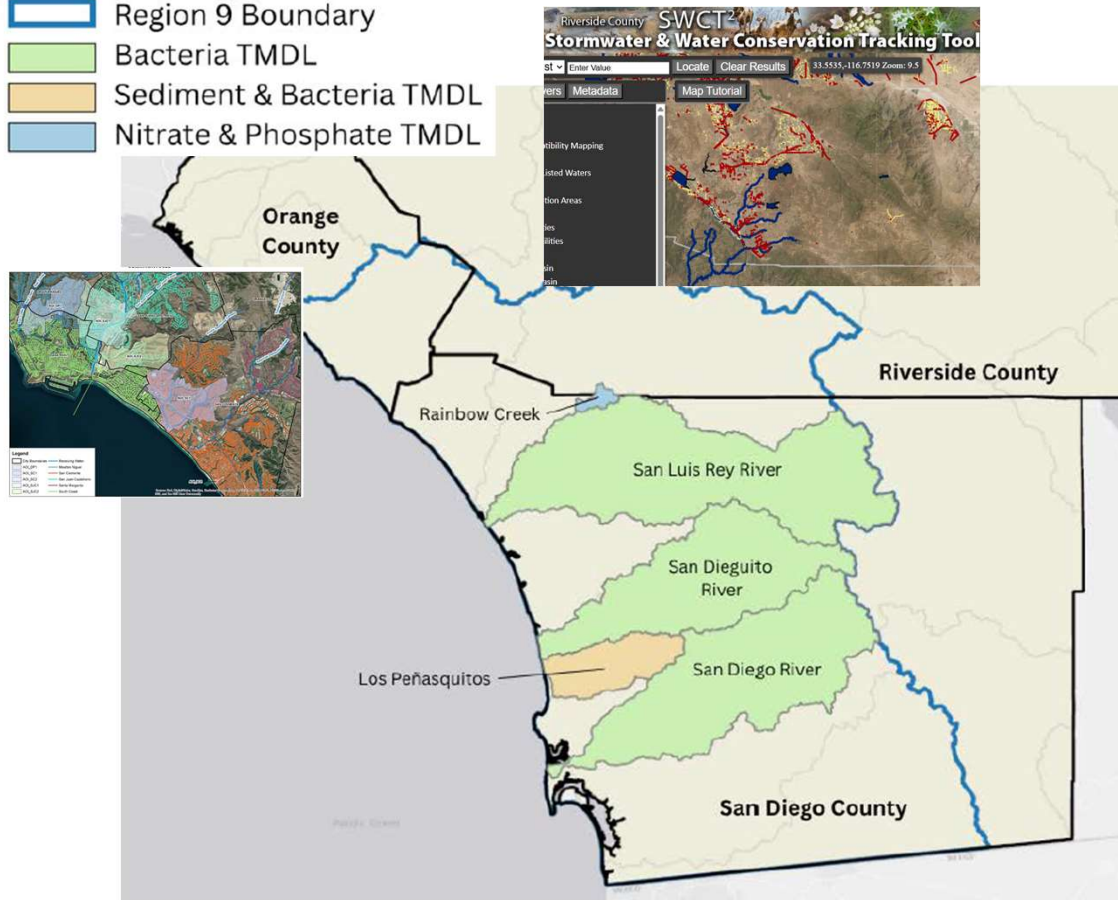
ATTACHMENTS

Attachment A: Discharge Prohibitions and Special Protections	A-1
Attachment B: Standard Permit Provisions and General Provisions	B-1
Attachment C: Acronyms, Abbreviations and Definitions.....	C-1
Attachment D: Jurisdictional Runoff Management Program Annual Report Form.....	D-1
Attachment E: Specific Provisions for Total Maximum Daily Loads Applicable to Order No. R9-2013-0001, as amended by Order Nos. R9-2015-0001 and R9-2015-0100.....	E-1
Attachment F: Fact Sheet / Technical Report for Order No. R9-2013-0001, as amended by Order Nos. R9-2015-0001 and R9-2015-0100	F-1
5. Existing Development Management	114
6. Enforcement Response Plans	119
7. Public Education and Participation	122
8. Fiscal Analysis.....	123

Total Maximum Daily Loads (TMDLs)

Legend

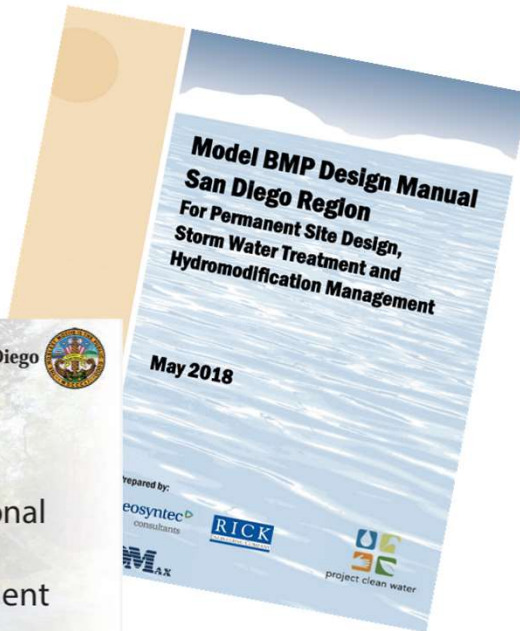
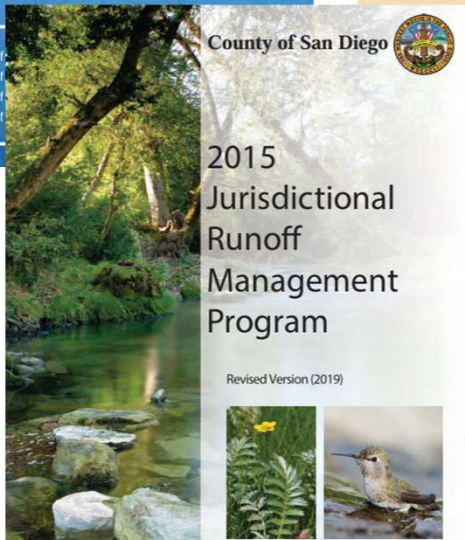
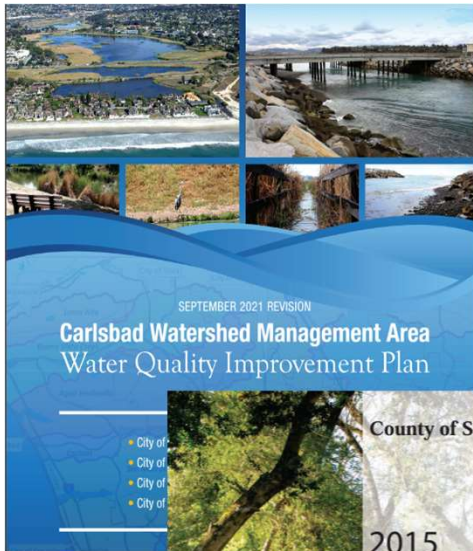
-  Region 9 Boundary
-  Bacteria TMDL
-  Sediment & Bacteria TMDL
-  Nitrate & Phosphate TMDL



Total Maximum Daily Loads (TMDLs) Imbedded in the MS4 Permit

- Maximum Limits on Pollution Allowed in Receiving Waters
- Plan to Restore Impaired Water Bodies
- Establishes a Compliance Schedule

Plans Required by the Permit



- **Water Quality Improvement Plan (WQIP)**
- **Jurisdictional Runoff Management Plan (JRMP)**
- **Best Management Practice Design Manual (BMP DM)**

Roadmap to Compliance



Water Quality Improvement Plans

Strategic Planning Document includes

Goals, Strategies, Schedules

Jurisdiction Runoff Management Plan

Jurisdiction Strategies for Implementation

**Monitoring, Reporting
Adaptive Management**

Prohibit Dry Weather (DW) Flows



Dry Weather Flows are Prohibited!

1. Discharge Prohibitions

- a. Discharges from MS4s in a manner causing, or threatening to cause, a condition of pollution, contamination, or nuisance in receiving waters of the state are prohibited.
- b. Non-storm water discharges into MS4s are to be effectively prohibited, through the implementation of Provision E.2, unless such discharges are authorized by a separate NPDES permit.

Development Regulations



Development Planning & Regulations

- Priority Development Project Categories
- Retention on-site
- Hydromodification
- Optional on-site alternative compliance

Priority Development Project Categories



- New Development: 10,000 sf Impervious
- Redevelopment: 5,000 sf Impervious



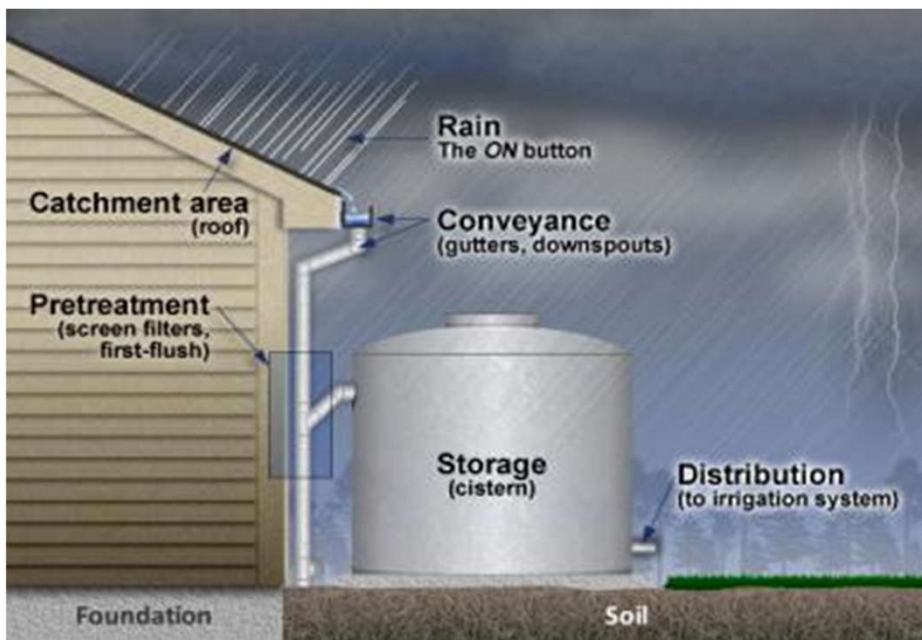
Priority Development Project Exemptions

- New Sidewalks, Bike Lanes, Trails using Low Impact Development
- Redevelop Alleys, Roadways as “Green Streets”



Retention Standard

- Priority Development Project to Retain 85% Storm Event
- Retain: Intercept, Store, Infiltrate, Evaporate



Other Regulatory Drivers

Statewide Trash Reduction Mandate

- Requires retrofit of storm drains in urban areas to capture trash
- Compliance deadline: December 2030

Receiving Water Limitations

- Storm drain discharges shall not cause or contribute to violations of water quality standards
- Compliance deadline: Immediate and ongoing

Biological Objectives

- Regulating stream sediment biology
- Compliance deadline: Pending



Regional Coordination



- Regional Stormwater Management Committee
- Project Clean Water – Regional Clearinghouse
- Southern California Coastal Water Research Project (SCCWRP)
- California Stormwater Quality Association (CASQA)

Construction General Permit

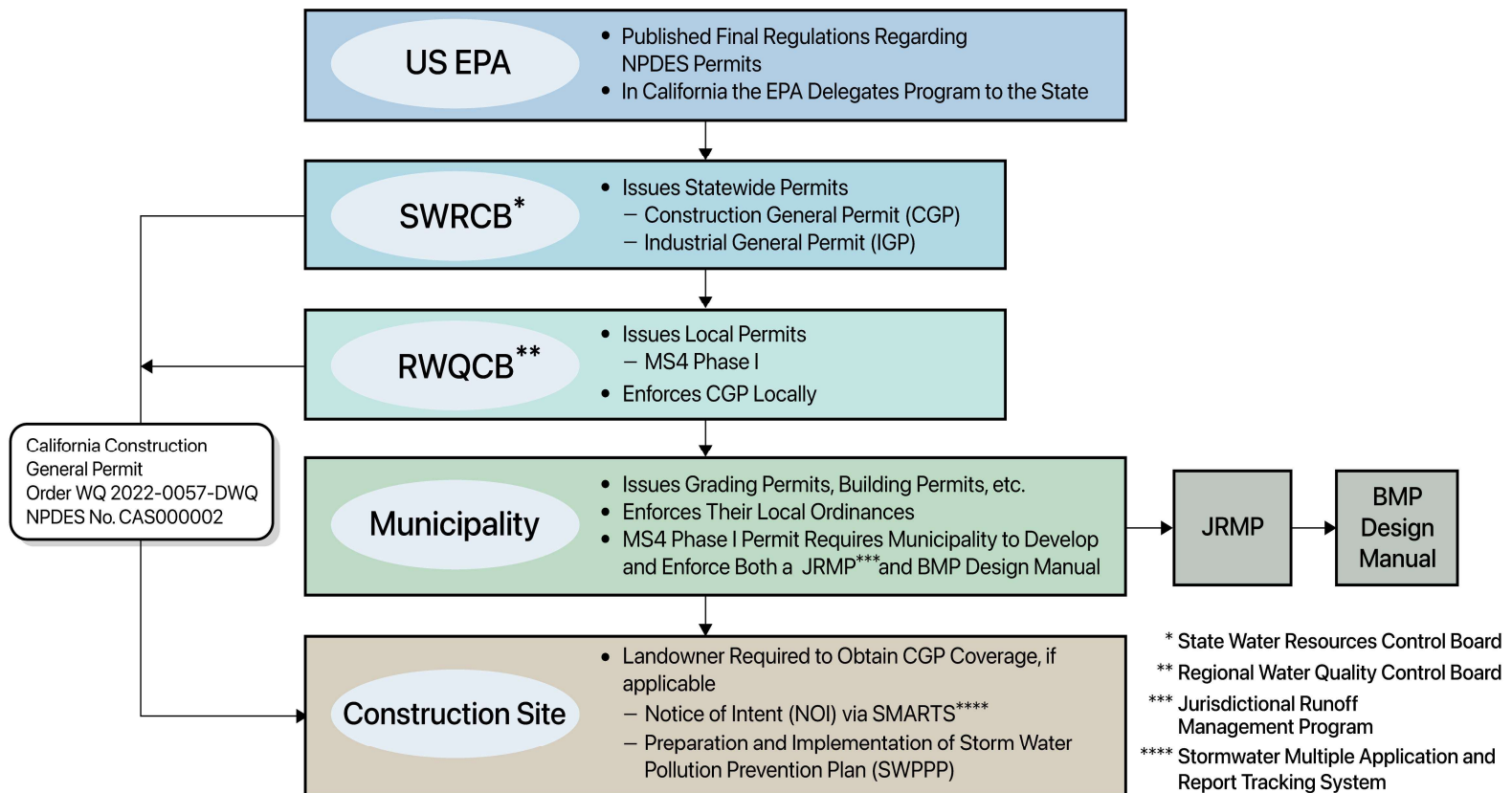
Presented by:

Miguel Angel Avalos
Atkins- Realis

Jayne Janda-Timba PE, CPG-TOR, QSD, QSP, QISP
RICK

Stormwater Permits – The Big Picture

The Path From the Clean Water Act to the Project



What are the CGP and Triggers for Obtaining Coverage?

“The Construction General Permit (CGP) - **Order WQ 2022-0057-DWQ**, is a statewide National Pollutant Discharge Elimination System (NPDES) permit enforced by the San Diego Regional Water Quality Control Board to regulate stormwater discharges from construction activities.”

Landowner is required to obtain coverage for projects that include construction or land disturbance activities that result in a disturbance of one or more acres of soil, or less than one acre but are part of a larger common plan of development.

New for 2022 Permit

This acreage includes, but is not limited to clearing, **demolition**, grading excavation, and other land disturbance activities, including staging and storage areas

CALIFORNIA STATE WATER RESOURCES CONTROL BOARD
1001 I Street Sacramento, CA 95814
<https://www.waterboards.ca.gov>

NATIONAL POLLUTANT DISCHARGE ELIMINATION SYSTEM (NPDES)
GENERAL PERMIT FOR STORMWATER DISCHARGES ASSOCIATED WITH
CONSTRUCTION AND LAND DISTURBANCE ACTIVITIES
(GENERAL PERMIT)

ORDER WQ 2022-0057-DWQ
NPDES NO. CAS000002

This Order was adopted by the State Water Resources Control Board on:	September 8, 2022
This Order shall become effective on:	September 1, 2023
The statewide programmatic permitting option per Section III.B.4 of this Order shall become effective on:	December 17, 2022
This Order shall expire on:	August 31, 2028

IT IS HEREBY ORDERED that this Order supersedes Order 2009-0009-DWQ as amended by Order 2010-0014-DWQ and 2012-0006-DWQ except for: (1) the requirement to submit annual reports by September 1, 2023, (2) enforcement purposes, and (3) as set forth in Section III.C of this Order. The discharger shall comply with the requirements in this Order to meet the provisions contained in Division 7 of the California Water Code (commencing with § 13000) and regulations adopted thereunder, and the provisions of the federal Clean Water Act and regulations and guidelines adopted thereunder.

IT IS ALSO HEREBY ORDERED that on or after December 17, 2022, a discharger deploying Executive Order N-73-20 may obtain regulatory coverage through the statewide programmatic permitting option in Section III.B.4 under Order 2009-0009-DWQ as amended by Orders 2010-0014-DWQ and 2012-0006-DWQ until September 1, 2023.

https://www.waterboards.ca.gov/board_decisions/adopted_orders/water_quality/2022/wqo_2022-0057-dwq.pdf

Why it Matters



Statewide California Construction GENERAL Permit (CGP)

- Regulates stormwater from construction sites that are equal to or more than 1 acre
- Prevents sediment & pollutant discharges to waters of the US
- Allows authorized stormwater and non-stormwater discharges
- Prohibits Pollutants (trash, washout, fuels/oils, soaps, or hazardous releases)
- Requires Numeric Action Levels (NALs), and (total maximum daily load) TMDL-based limits when applicable
- Non-compliance can lead to fines up to **\$10,000 per day per violation**

New for
2022
Permit

VIOLATION

CGP Requires Landowner To:

- Determine Risk-based classification for projects (Risk Levels 1-3 or Risk Type 1 – 3)
 - Risk Level/Type governs project specific CGP requirements
- Prepare Stormwater Pollution Prevention Plans (SWPPPs)
- Best Management Practices (BMPs) - implementation and maintenance (during and post-construction)
- Site Inspection Requirements
- Electronic reporting via SMARTS system
- Pay filing fee and annual fees



Combined Risk Level Matrix

		Sediment Risk		
		Low	Medium	High
Receiving Water Risk	Low	Level 1	Level 2	
	High	Level 2		Level 3

Watershed Erosion Estimate (tons/acre)	Site-Specific Sediment Risk
Less than 15 tons/acre	Low
Greater than or equal to 15 tons/acre and less than 75 tons/acre	Medium
Greater than or equal to 75 tons/acre	High

How Does A Landowner Obtain CGP Coverage?



Prepare a site specific SWPPP



Prepare, submit and certify Notice of Intent (NOI) via SMARTS



Pay the filing fee



Obtain a Waste Discharge Identification Number (WDID#)

Alternatives:

- Rainfall Erosivity Waiver (For projects between 1–5 acres and a Rainfall Erosivity) ($R < 5$)
- Notice of Non-Applicability (NONA) (no hydrologic connection), though not likely in San Diego Region



New for
2022
Permit

Roles and Responsibilities

The **Legally Responsible Person (LRP)**: certifies the Notice of Intent and other SWPPP documents

LRP can assign a **Duly Authorized Representative (DAR)**

The **Qualified SWPPP Developer (QSD)**: prepares the SWPPP, designs compliance approach, performs key inspections

The **Qualified SWPPP Practitioner (QSP)**: implements the SWPPP in the field, conducts inspection and monitoring

The **QSP delegate** supports the QSP in a limited role

Discharger

The **discharger** (typically the owner/developer): responsible for permit compliance, including work done by QSDs, QSPs, and 3rd Parties such as corrective actions

LRP/DAR

Third Parties (contractors): install and maintain BMPs per SWPPP, follow QSD/QSP guidance, unique interface

QSD

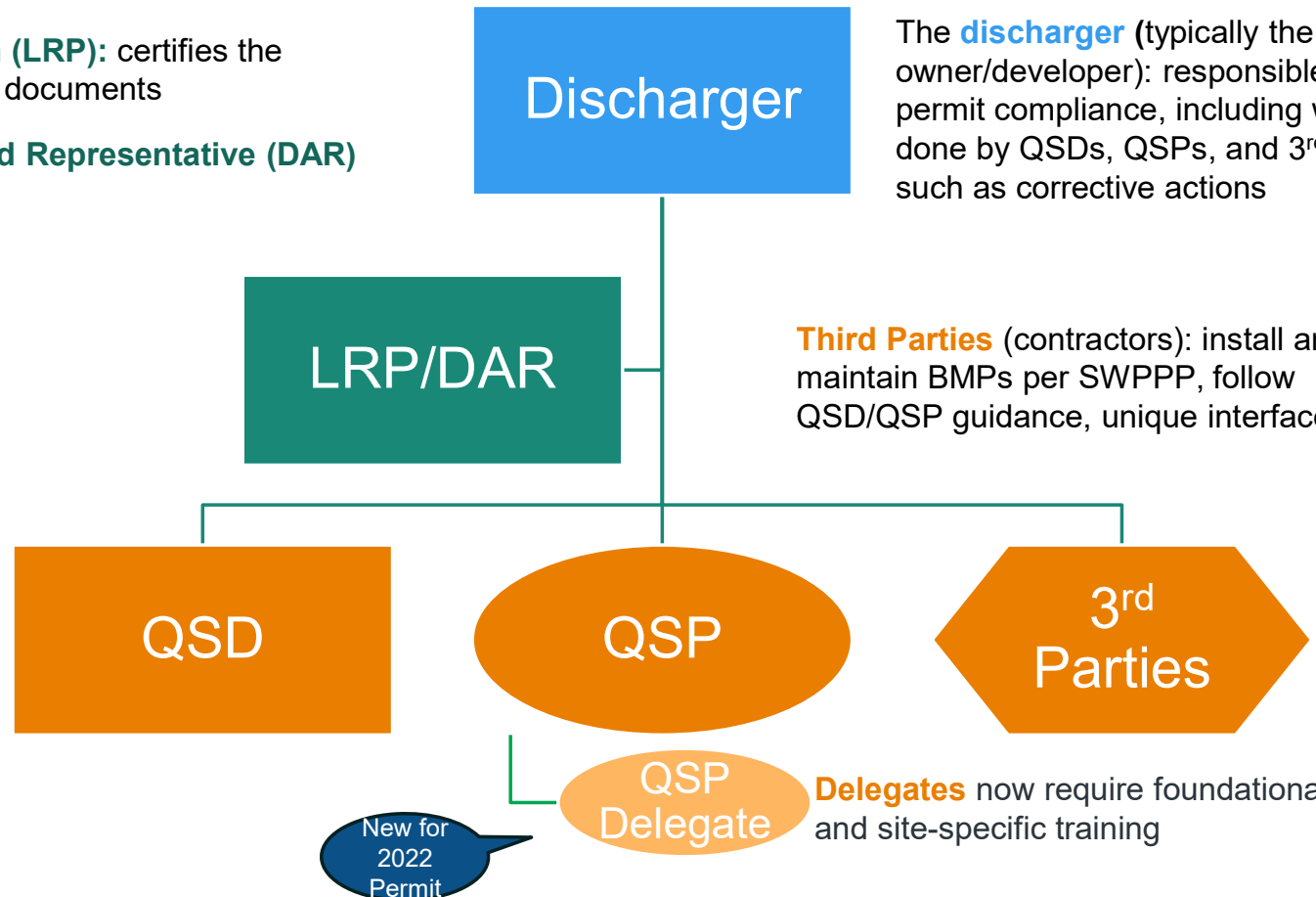
QSP

3rd Parties

QSP Delegate

Delegates now require foundational and site-specific training

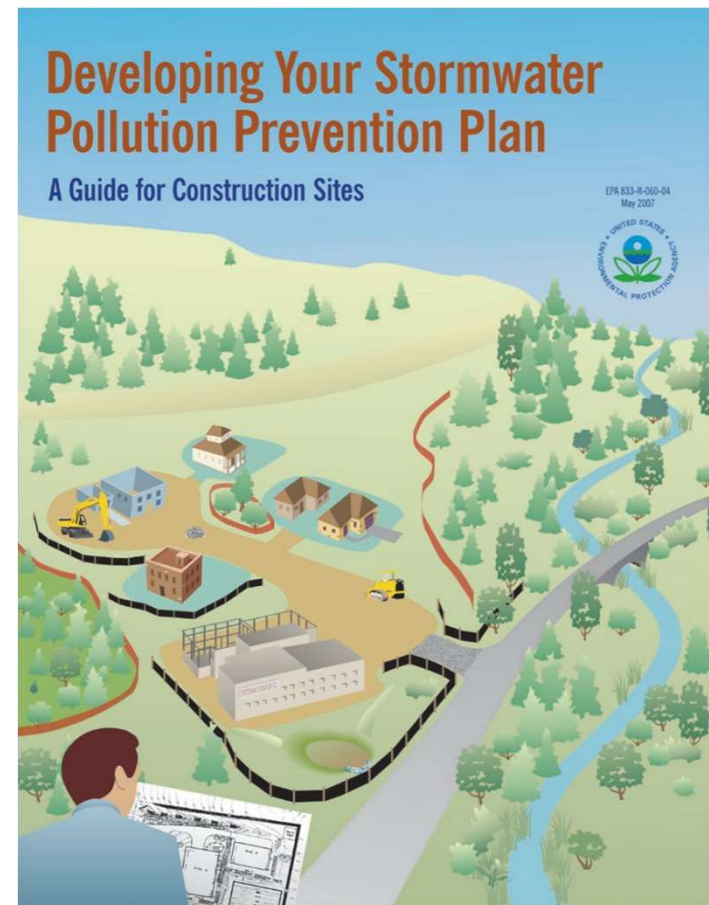
New for 2022 Permit



The Qualified SWPPP Developer (QSD)

- Certified professional responsible for preparing, signing, and revising the SWPPP
- Complete the risk determination
- Advises the discharger on permit compliance strategies and BMP selection
- Oversees higher-level inspections
 - **Within 30 days of:**
 - **Construction Start**
 - **QSD replacement**
 - Twice Annually
 - Within 14 calendar days after a Numeric Action Level (NAL) exceedance

New for
2022
Permit



“Development” of the SWPPP

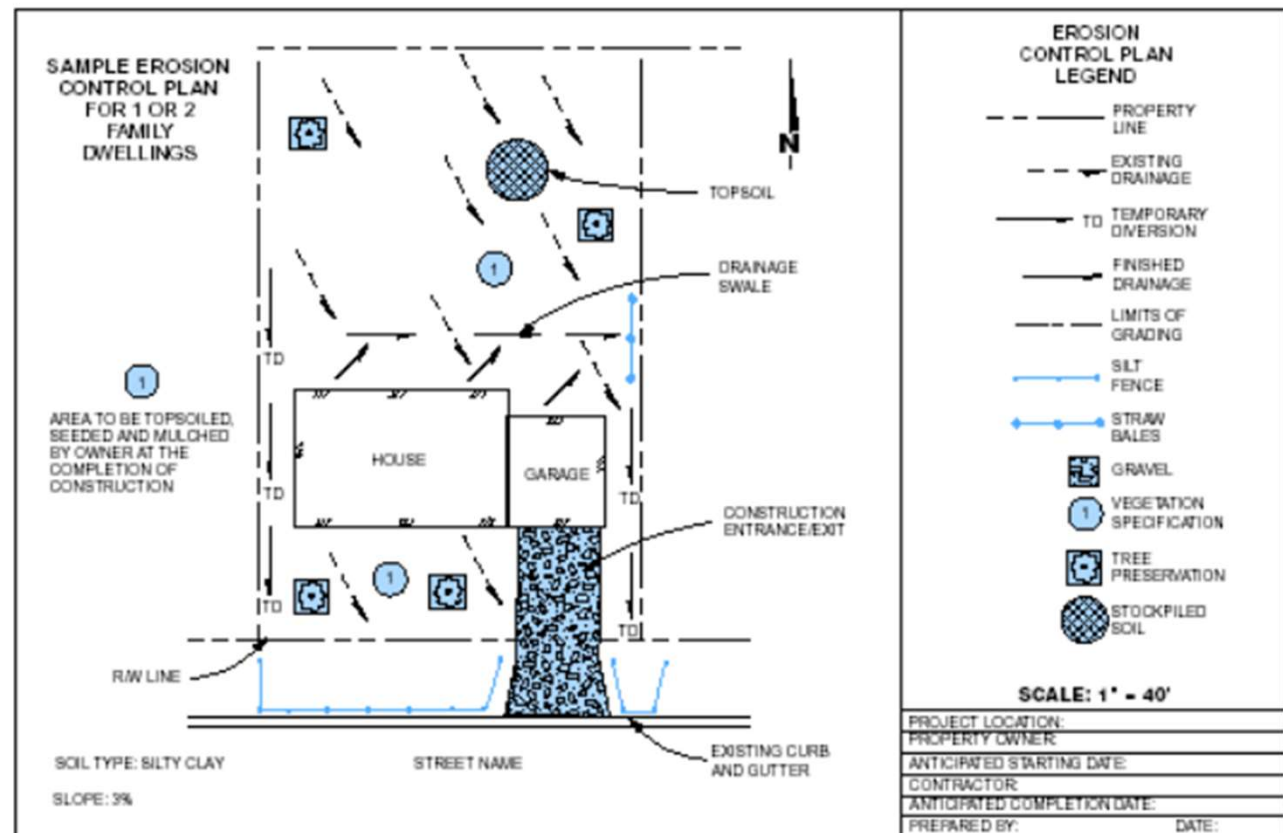
- Developed before start of construction
- Reflects site-specific conditions, sequencing, and phasing
- Must cover **all phases** of the project!



“Development” of the SWPPP – Site Maps

- SWPPP includes
 - Pollutant/source assessment
 - Spill response
 - Monitoring plan
 - Stabilization plan
 - **BMP Plan aka Site Maps**

- BMP Categories
 - Erosion Control
 - Sediment Control
 - Tracking Control
 - Materials and Waste Management
 - Non-Stormwater Management



Field Implementation, Monitoring & Reporting (QSP Role)



SWPPP as a dynamic living document (DLD) - must be accessible onsite

Best Management Practices (BMPs) in the field - ensure proper installation and maintenance for BMP effectiveness

Contains the CASQA BMP Fact Sheets

Each Fact Sheet Contains:

- Description and Purpose
- Suitable Applications
- Limitations
- Implementation
- Inspection and Maintenance
- References and Additional Resources

*Available in Spanish



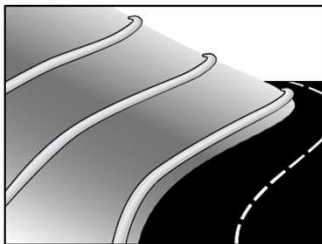
Field Implementation, Monitoring & Reporting (QSP Role)



CASQA BMP Fact Sheet – Fiber Rolls

Fiber Rolls

SE-5



Categories	
EC	Erosion Control <input checked="" type="checkbox"/>
SE	Sediment Control <input checked="" type="checkbox"/>
TC	Tracking Control
WE	Wind Erosion Control
NS	Non-Stormwater Management Control
WM	Waste Management and Materials Pollution Control
Legend:	
<input checked="" type="checkbox"/>	Primary Category
<input checked="" type="checkbox"/>	Secondary Category

Targeted Constituents	
Sediment	<input checked="" type="checkbox"/>
Nutrients	
Trash	
Metals	
Bacteria	
Oil and Grease	
Organics	

Potential Alternatives	
SE-1	Silt Fence
SE-4	Gravel Bag Berm
SE-8	Sandbag Barrier
SE-12	Manufactured Linear Sediment Controls
SE-13	Compost Socks and Berms
SE-14	Biofilter Bags

Copyright 2025 by the California Stormwater Quality Association



Fiber Rolls

SE-5

- Fiber rolls that come manufactured containing polyacrylamide (PAM), a flocculating agent within the roll, are considered passive treatment technologies and are subject to additional requirements, see Passive Treatment (SE-15).

Implementation

Fiber Roll Materials

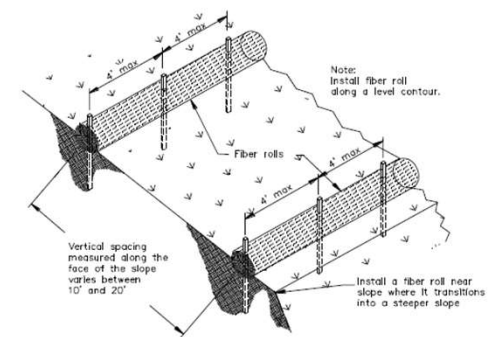
- Fiber rolls are to be prefabricated.
- Fiber rolls are made from weed-free rice straw, flax, curled wood fiber, or coir bound into a tight tubular roll by netting or wrap (see Limitations above regarding plastic netting).
- Typical fiber rolls vary in diameter from 6 in. to 20 in. Larger diameter rolls are available as well. The larger the roll diameter, the higher the sediment retention capacity.
- Typical fiber rolls lengths are 4, 10, 20 and 25 ft., although other lengths may be available.

Installation

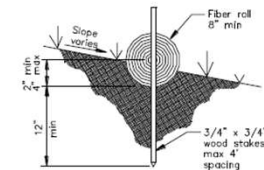
- Locate fiber rolls on level contours spaced as follows:
 - Slope inclination between 20:1 and 4:1 (H:V): Place fibers rolls at a maximum interval of 35 ft.
 - Slope inclination of 4:1 (H:V): Place fiber rolls at a maximum interval of 20 ft.
 - Slope inclination between 4:1 and 2:1 (H:V): Place fiber rolls at a maximum interval of 15 ft. (a closer spacing is more effective).
 - Slope inclination 2:1 (H:V) or greater: Place fiber rolls at a maximum interval of 10 ft. (a closer spacing is more effective).
- It is critical that fiber rolls are installed perpendicular to water flow and parallel to the slope contour.
- Prepare the slope before beginning installation.
- Dig small trenches across the slope on the contour. The trench depth is to be 1/4 to 1/3 of the thickness of the roll, and the width is to be equal to the roll diameter, in order to provide area to backfill the trench.
- Use wood stakes with a nominal classification of 0.75 by 0.75 in. and minimum length of 24 in.
- For Type 1 installations:
 - Place in a trench that is from 2 to 4 inches deep.
 - Fasten with wood stakes every 4 feet along the length of the fiber roll.
 - Fasten the ends of the fiber roll by placing a stake 6 inches from the end of the roll.

Fiber Rolls

SE-5



TYPICAL FIBER ROLL INSTALLATION
N.T.S.



ENTRENCHMENT DETAIL
N.T.S.

Field Implementation and Monitoring (QSP and QSP Delegate Role)

- Perform weekly inspections
 - Weekly inspections can be delegated to QSP delegate w/ additional foundational and site-specific training.
 - If weekly inspections are delegated, **the QSP has to perform one weekly inspection per calendar month**
- Perform pre-Qualifying Precipitation Event (QPE), during QPE, and post-QPE inspections – All Risk Level (RL) projects **(only the QSP can perform pre-QPE inspection)**
- Collect stormwater samples during QPEs – RL 2 & 3
- If there is a Numeric Action Level (NAL) exceedance, inspect within 14 calendar days **(only the QSP can perform)**
- Perform the Final Notice of Termination (NOT) inspection **(only the QSP can perform)**

New for
2022
Permit



New for
2022
Permit

Field Monitoring & Sampling (QSP Role)

New for
2022
Permit

Qualifying Precipitation Event (QPE)

Qualifying precipitation event is any weather pattern that is forecast to have a 50 percent or greater Probability of Precipitation (PoP) and a Quantitative Precipitation Forecast (QPF) of 0.5 inches or more within a 24-hour period.

The event begins with the 24-hour period when 0.5 inches has been forecast and continues on subsequent 24-hour periods when 0.25 inches of precipitation or more is forecast.



Forecast based on the National Weather Service Forecast Office of the National Oceanic and Atmospheric Administration (NOAA)

Field Implementation, Monitoring & Reporting (QSP Role)



NATIONAL WEATHER SERVICE
NATIONAL OCEANIC AND ATMOSPHERIC ADMINISTRATION

Forecast for 32.7816N -117.1458W (Elev 282FT)

First 24 hours of both 0.5" and 50% **Subsequent 24-hour periods with 0.25" forecasted**

Date	Tue Feb 21				Wed Feb 22				Thu Feb 23				Fri Feb 24				Sat Feb 25				Sun Feb 26				Mon Feb 27							
High Temp(F)	63				52				53				58				54				55				58							
Low Temp(F)	47				47				45				47				46				42				44							
Time	4am	10am	4pm	10pm	4am	10am	4pm	10pm	4am	10am	4pm	10pm	4am	10am	4pm	10pm	4am	10am	4pm	10pm	4am	10am	4pm	10pm	4am	10am	4pm	10pm	4am	10am	4pm	10pm
Temp(F)	48	60	58	53	48	51	50	47	46	50	52	48	48	55	56	51	48	50	52	46	43	52	54	46	46	46	42	40	42	42	43	43
Dew Point(F)	44	49	50	46	37	36	37	38	41	43	42	44	45	48	47	48	46	46	41	41	41	42	40	42	42	42	43	43	44	44	44	44
Relative Humidity(%)	85	66	74	79	66	57	60	70	83	75	68	85	89	77	72	87	91	86	67	84	91	70	59	70	59	59	59	59	59	59	59	59
Wind Direction	S	S	SW	W	W	W	W	W	W	SW	S	SW	W	SW	S	S	S	S	W	SW	SW	SW	W	W	W	W	W	W	W	W	W	W
Wind Speed(mph)	2	8	12	21	30	29	21	13	8	10	12	7	10	16	21	13	8	12	10	5	7	8	9	5	5	2	5	9	7	7	7	7
Wind Gust(mph)	6	15	21	32	45	44	32	21	14	17	18	13	18	25	33	21	15	20	18	10	13	15	17	10	7	10	17	13	13	13	13	13
Cloud Cover(%)	50	40	80	80	45	40	50	75	80	80	85	75	70	65	80	90	95	65	65	60	90	95	55	65	75	70	55	90	90	90	90	90
Prob. of Precip(%)	-	-	40	35	40	50	50	75	85	90	90	85	80	85	80	85	80	80	65	55	30	15	5	5	5	5	5	5	15	15	15	15
6 Hr. Precip(in)	0.00	0.00	0.02	0.03	0.03	0.04	0.04	0.05	0.15	0.14	0.23	0.22	0.16	0.16	0.28	0.37	0.32	0.20	0.16	0.13	0.11	0.02	0.00	0.00	0.00	0.00	0.00	0.00	0.01	0.01	0.01	0.01
6 Hr. Snow(in)	0.0	0.0	0.0	0.0	0.0	0.0	0.0	0.0	0.0	0.0	0.0	0.0	0.0	0.0	0.0	0.0	0.0	0.0	0.0	0.0	0.0	0.0	0.0	0.0	0.0	0.0	0.0	0.0	0.0	0.0	0.0	0.0
Snow Level(ft)	6400	6000	5800	4300	2700	2600	2800	2800	2900	3200	3700	4100	4600	4800	5100	4900	4300	3800	3500	3200	3100	3300	3500	3500	3500	3500	3500	3500	4200	4200	4200	4200

24-hour period without 0.25" forecasted

Qualifying Precipitation Event

End of QPE

Field Implementation and Monitoring (QSP Role)

Table 2 – Visual Inspection Schedule⁷

Risk Level	Weekly	Pre-Qualifying Precipitation Event	During Qualifying Precipitation Event	Post-Qualifying Precipitation Event
1	X	X	X	X
2	X	X	X	X
3	X	X	X	X

All Risk Level projects required to perform visual inspections as noted in table above.



Field Implementation and Monitoring (QSP Role)

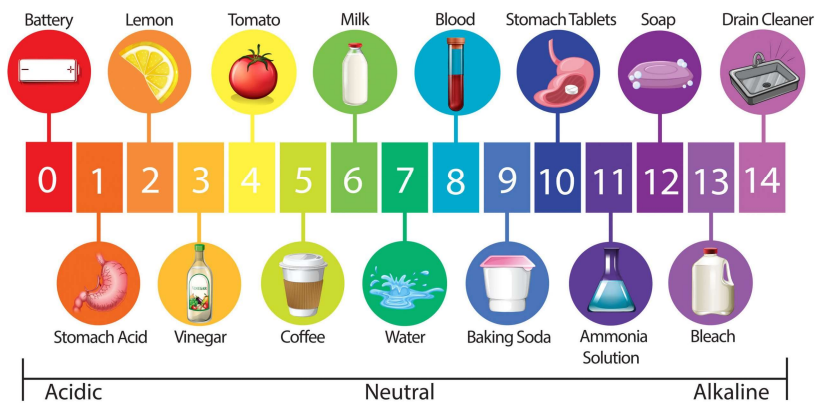
Table 5 - Numeric Action Levels and Numeric Effluent Limitations

Parameter	Discharger Type	Numeric Action Level	Numeric Effluent Limitation
pH	Risk Level 2 and 3	Lower = 6.5 Upper = 8.5	Not Applicable
Turbidity	Risk Level 2 and 3	250 NTU	Not Applicable
TMDL-related Pollutant	Responsible Dischargers with a project of any Risk Level	Refer to Table H-2 in Attachment H	Refer to Table H-2 in Attachment H

Only Risk Level 2 and 3 projects require **QPE** pH and turbidity sampling as noted in table.

Note: Non-visible sampling requirements have their own protocol.

The pH Scale



Turbidity (NTU)

Water Samples:



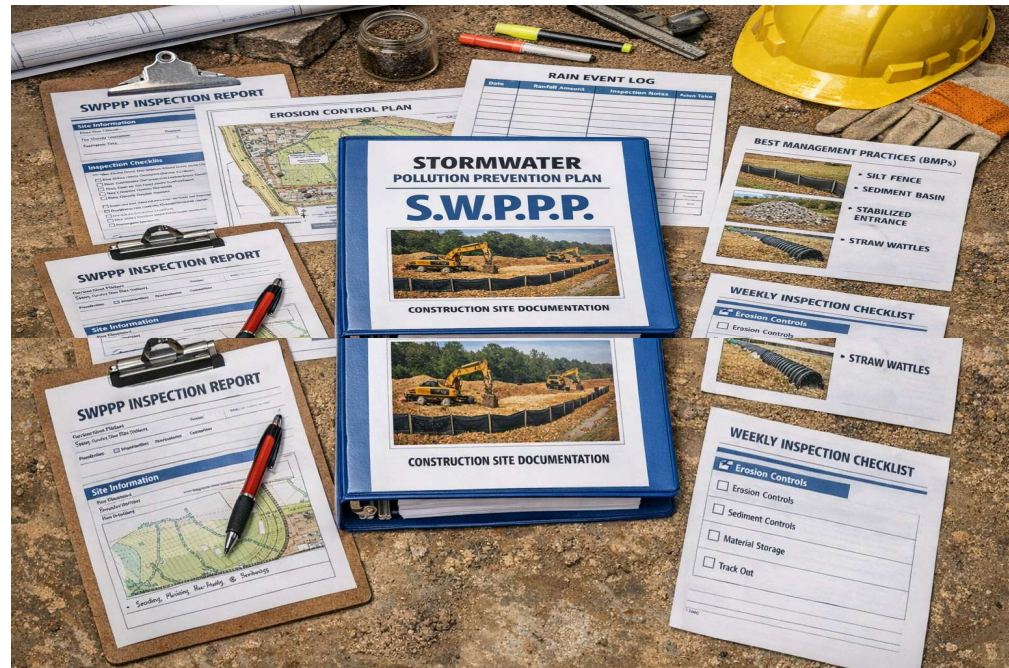
QSP Documentation

- Remember! **SWPPP** is a **dynamic living document** (DLD)
- The CGP is built on the principle: **DOCUMENT EVERYTHING TO CYA!**
- Site documentation should support ongoing BMP upkeep, storm preparation, and repairs
 - Ensures site compliance with CGP
 - These are the first things inspectors and regulators review.

Types of Records

Field logs, forecasts, inspection reports, site photos, corrective actions, etc

Sampling data, exceedance reports, annual reports, etc



SMARTS Documentation

- **Sampling data** needs to be uploaded to SMARTS **within 30 days** of end of QPE
 - If NAL Exceedance: **within 10 days!**
- **Change of Information (COI)** required anytime project details change, including:
 - Construction delays/extensions, new disturbed area, etc.
- Changes to ownership require a notice of termination (NOT)
 - Since each WDID is unique to the discharger
- Organized documentation makes for easier Annual Reporting and Project Closeout



Annual Reporting

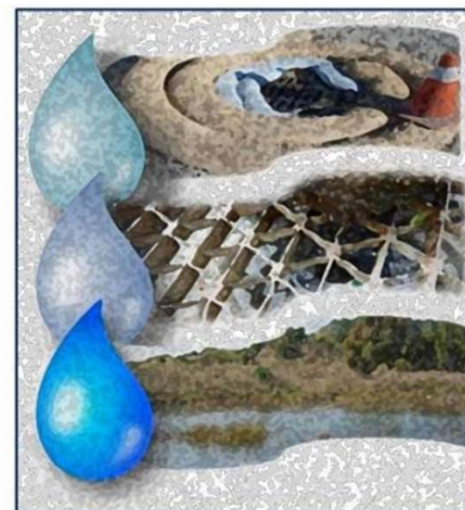


- Submitted through **SMARTS** every year by **September 1**
- Summarizes inspections, BMP maintenance, sampling data, and any exceedances
- Documents corrective actions taken and updates to the SWPPP
- Confirms current site status (active/inactive) and disturbed acreage
- **Must be certified by the LRP or DAR**
- Demonstrates that stormwater controls were actively managed and documented
- Required to maintain good standing under the CGP

STATEWIDE CONSTRUCTION STORMWATER
GENERAL PERMIT

DISCHARGER'S GUIDE TO THE STORMWATER MULTIPLE
APPLICATION AND REPORT TRACKING SYSTEM (SMARTS)
DATABASE

ANNUAL REPORT



Project Close Out via Notice of Termination (NOT)

- Notice of Termination (NOT) is processed when:
 - construction is (near) complete,
 - pollutants are removed,
 - final stabilization is achieved, and
 - post-construction features are in place
- NOT submittal must include:
 - Final site map and photos showing stabilized conditions
 - QSP final visual inspection
 - Verification of installed post construction BMPs or LIDs
 - Acreage changes
- Final stabilization methods:
 - 70% cover (subjective) , RUSLE/RUSLE2, or custom
- Annual Report still required upon NOT
 - Landowner can't certify until annual report is submitted/approved

New for 2022 Permit

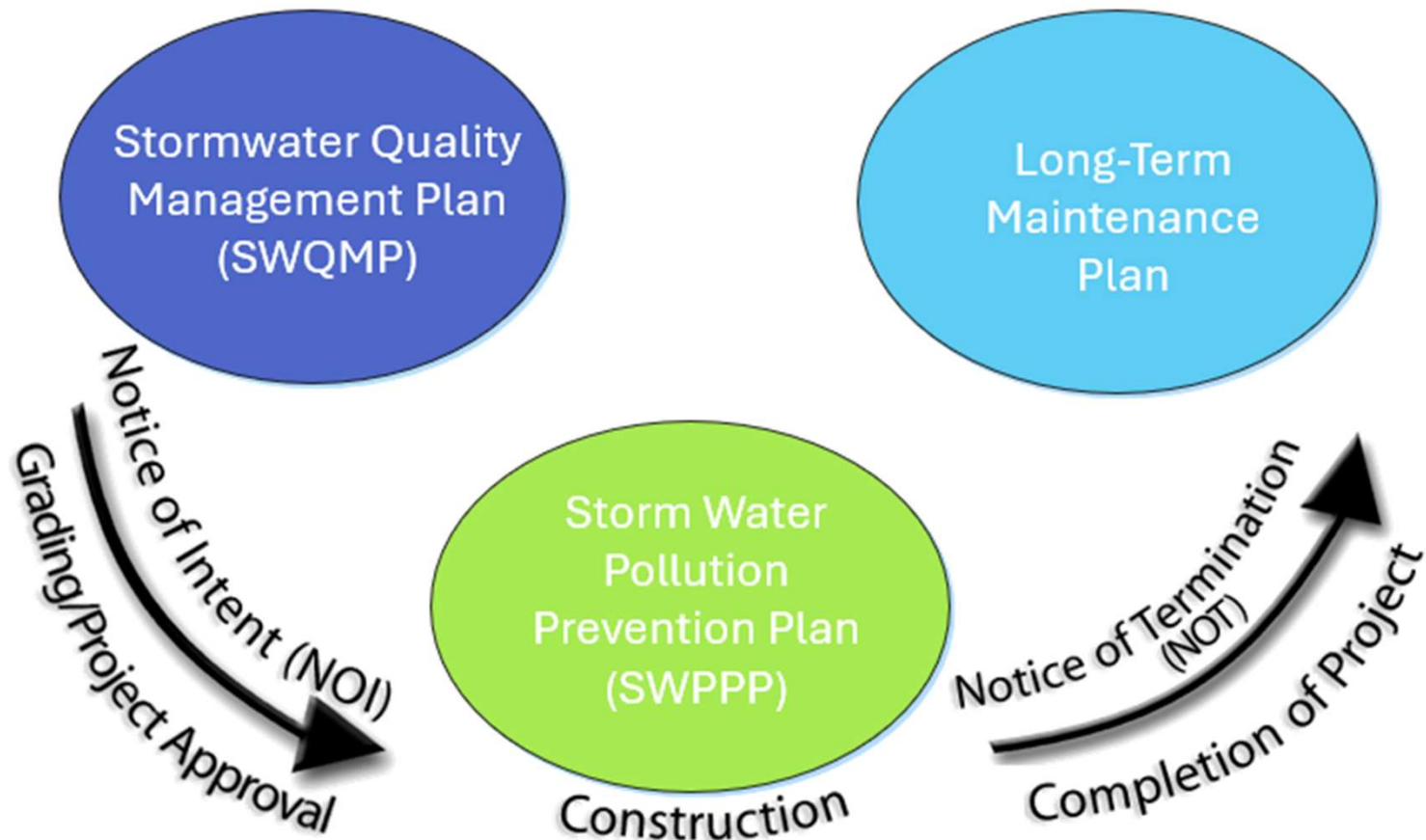
New for 2022 Permit

STATEWIDE CONSTRUCTION STORM WATER GENERAL PERMIT
 DISCHARGER'S GUIDE TO THE STORM WATER MULTIPLE APPLICATION AND REPORT TRACKING SYSTEM (SMARTS) DATABASE

NOTICE OF TERMINATION



Life Cycle of A Project: Where does CGP fit into the Big Picture



Other Common Permits or Requirements

Presented by:

Nicole Rieger PE, CFM, QSD
DUDEK

Scott Cartwright PE
CR Associates

California Environmental Quality Act (CEQA)



Standardized process to disclose to the public and decisionmakers and evaluate if a project has significant environmental impacts



Lead agency is the public agency that has the principal responsibility for overseeing the project.



Need to have the impacts of the project well defined.



Changes to the impact area may require reanalysis and potentially recirculation of the document or section of the document

California Environmental Quality Act (CEQA)



- Types of CEQA Documents:

- Notice of Exemption - various Ministerial and Categorical Types**

- Meets criteria to be exempt from CEQA
- May require hazards, biology and cultural studies to prove exempt
- Timeline: 1-3 months

- Negative Declaration (ND)**

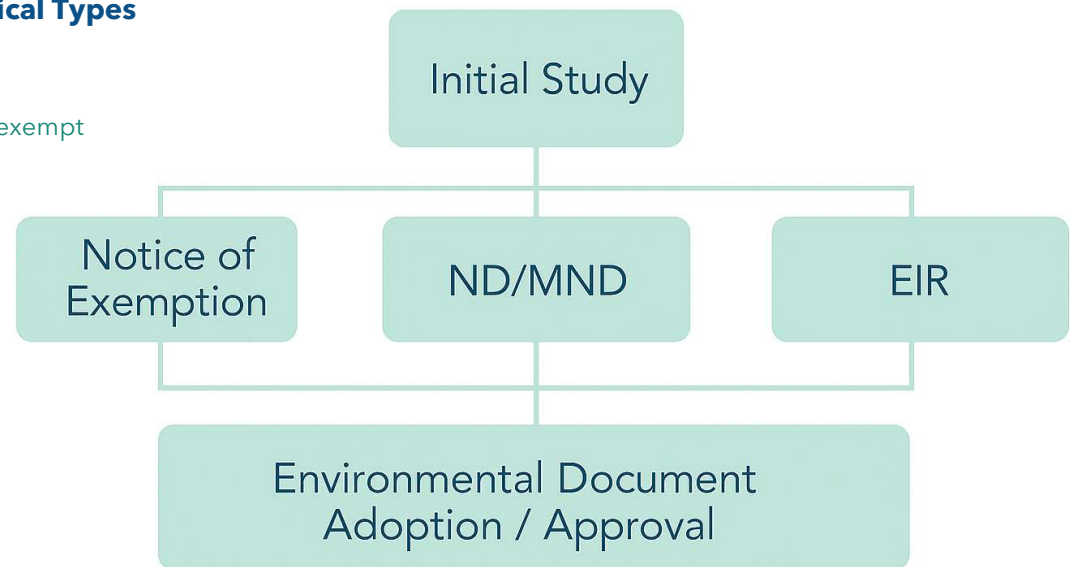
- No Significant Impact
- Timeline: 6-8 months

- Mitigated Negative Declaration (MND)**

- Potentially significant but mitigable
- Timeline: 6-8 months

- Environmental Impact Report (EIR)**

- Significant impacts
- Timeline: 12-24 months depending on agency



CEQA Study Categories



Category	Focus Area
Aesthetics	Visual character, scenic vistas, light/glare impacts
Agriculture & Forestry	Farmland conversion, forest resources, Williamson Act contracts
Air Quality	Emissions, compliance with air plans, sensitive receptors
Biological Resources	Habitat, special-status species, wetlands, wildlife corridors
Cultural Resources	Historic buildings, archaeological sites, tribal cultural resources
Energy	Energy use efficiency, renewable energy integration
Geology & Soils	Seismic hazards, erosion, unstable soils, expansive soils
Greenhouse Gas Emissions	GHG generation, consistency with reduction plans
Hazards & Hazardous Materials	Transport, use, disposal of hazardous materials, proximity to schools
Hydrology & Water Quality	Flooding, drainage, water quality, groundwater recharge
Land Use & Planning	Consistency with plans, zoning, habitat conservation plans

CEQA Study Categories



Category	Focus Area
Mineral Resources	Availability and loss of mineral resources
Noise	Construction and operational noise, vibration impacts
Population & Housing	Growth inducement, displacement of housing or people
Public Services	Fire, police, schools, parks, other public facilities
Recreation	Demand for recreational facilities, impacts on existing facilities
Transportation	Traffic, safety, transit, bicycle/pedestrian facilities
Tribal Cultural Resources	Impacts on tribal cultural sites and resources
Utilities & Service Systems	Water supply, wastewater, solid waste, storm drainage
Wildfire	Risks related to wildfire hazards and evacuation
Mandatory Findings of Significance	Cumulative impacts, substantial adverse effects on humans or environment

Section 404 of the Clean Water Act

- Administered by the U.S. Army Corps of Engineers (USACE)
- Regulates the discharge of dredged or fill material into waters of the United States, including wetlands
- Includes temporary fill (i.e. diversion berms, check dams, etc.)
- If a project requires a 404 permit, it almost always requires a 401 permit
- Water of the United States definition is not clear cut and can show up in unexpected places
- Often includes mitigation requirements for impacts
- Mitigation ratio vary and it is common to have to mitigated for 4 times the area of impact



Section 404 of the Clean Water Act



Types of Permits

Letter of Permission

- Typically for long-term, programmatic project with phase implementation
- Timeline: 4-6 months

Nationwide permits

- Preapproved permits that cover common activities and do not require full individual permit review, simplify and expedite permitting
- Timeline: 6-12 months

Individual Permit

- Projects that don't qualify for a nationwide permit and require a more detailed review
- Timeline: 12-24 months



US Army Corps
of Engineers®

Section 401 Water Quality Certification



- Administered by the State Water Resources Control Board and the Regional Water Resources Control Board
- Porter-Cologne Water Quality Control Act is California's primary law governing water quality
 - Has more stringent requirements than the federal permits
 - Needs to be completed before federal permits (i.e. Section 404) are issued.
- Triggers are:
 - Activity that may result in a discharge into waters of the United States
 - Discharge of dredged or fill material into a water of the State
 - Projects that require a Section 404 permit
- A pre-filing meeting is required before application is submitted.
- CEQA determination needs to be complete before the Order is issued.
- Significant Fees are required
- Timeline: 6-12 months



California Fish and Wildlife Game Code 1602 permit



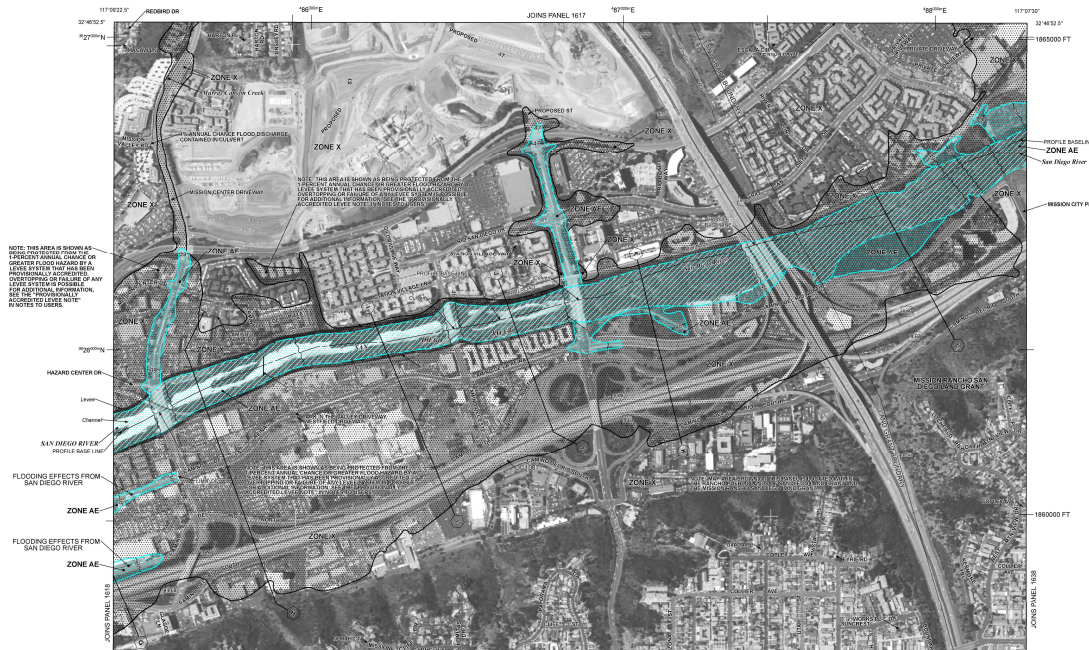
- Administered by the California Department of Fish and Wildlife (CDFW)
- Requires notification of CDFW for activities that may affect rivers, streams or lakes to ensure the protection of fish, wildlife, and riparian habitats.
- Triggers are:
 - Divert or obstruct the natural flow of a river, stream, or lake.
 - Change the bed, bank, or channel of a river, stream, or lake.
 - Use or remove material from these water bodies.
 - Deposit debris, waste, or other materials into them.
- CDFW will issue a Lake and Streambed Alteration Agreement (LSA) that lists the measures to avoid minimize or mitigate harm.
- Fees are required.
- Typical permit is valid for 5 years but longer term permits are possible.
- Timeline: 6-12 months



National Flood Insurance Program (NFIP)



- Administered by Federal Emergency Management Agency (FEMA)
- Provide floodplain mapping of flood hazard zones throughout the United States (100-year floodplain)
- Provides regulations to restrict activities that may increase flood risks
- Local floodplain administrators regulate construction and land use to comply with the NFIP
- Focuses on project impacts that may occur within a regulated floodplain or floodway.



National Flood Insurance Program (NFIP)



- Most common types of studies for large projects:

- No Rise Certification**

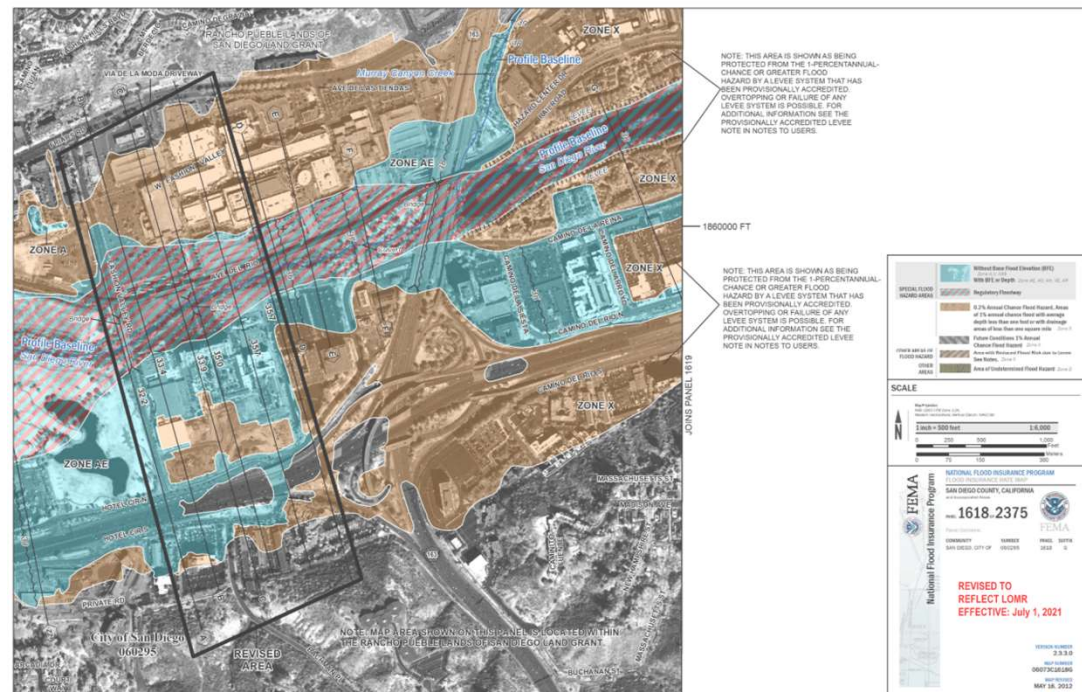
- Project Impacts will not meet the definition of a rise in water surface elevation
- Timeline: 6-8 months (Local Approval)

- Conditional Letter of Map Revision (CLOMR)**

- Changes in the floodway and/or floodplain in elevation or location
- Prepared during the design phase
- Timeline: 9-12 months

- Letter of Map Revision (LOMR)**

- Finalized version of the CLOMR
- Update a map to be consistent with existing conditions
- Requires as-built plans
- Timeline: 9-12 months



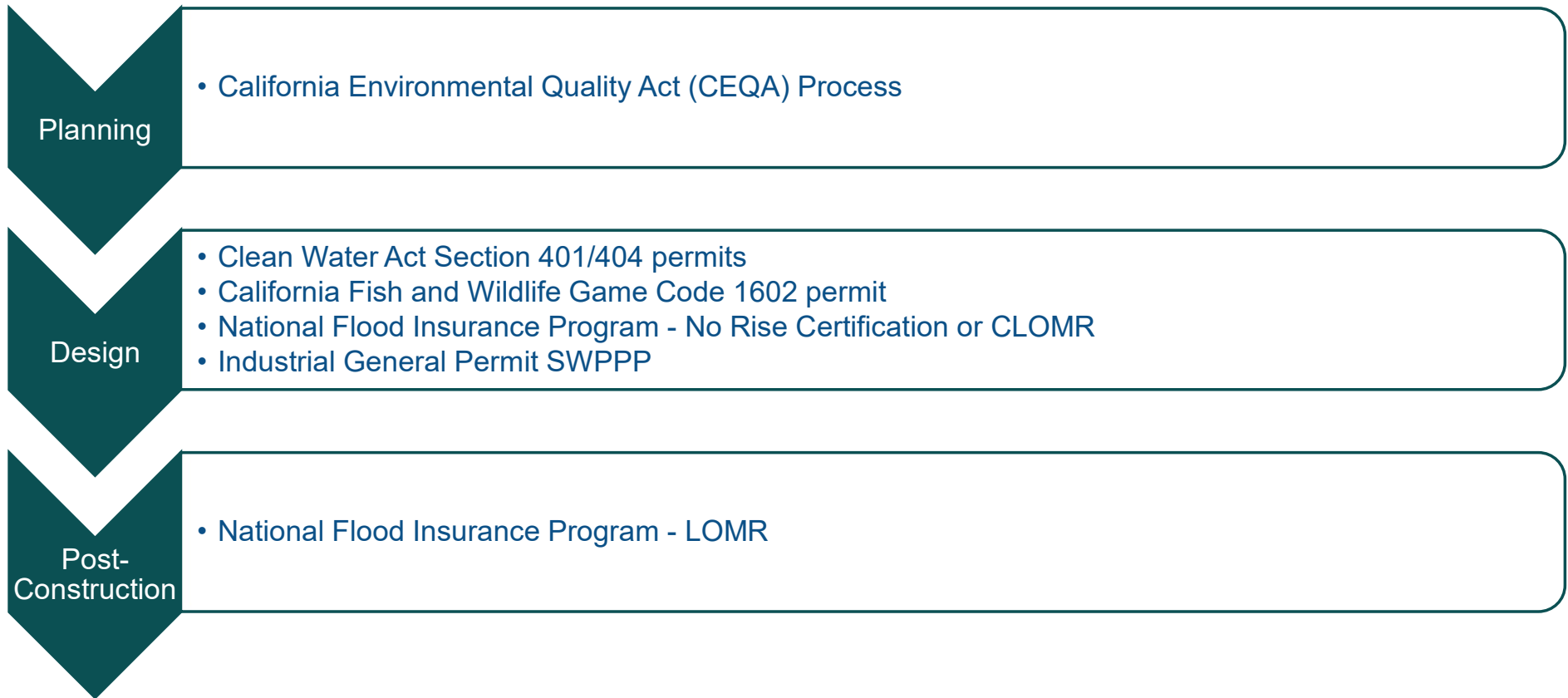
California Industrial General Permit (IGP)



- Administered by the State Water Resources Control Board
- The permit regulates stormwater discharges associated with industrial activities to prevent pollutants from being carried into rivers, lakes, and coastal waters during rain events
- Regulates facilities that have activities that fall under one of the Standard Industrial Classification (SIC) codes listed in Attachment A of the permit.



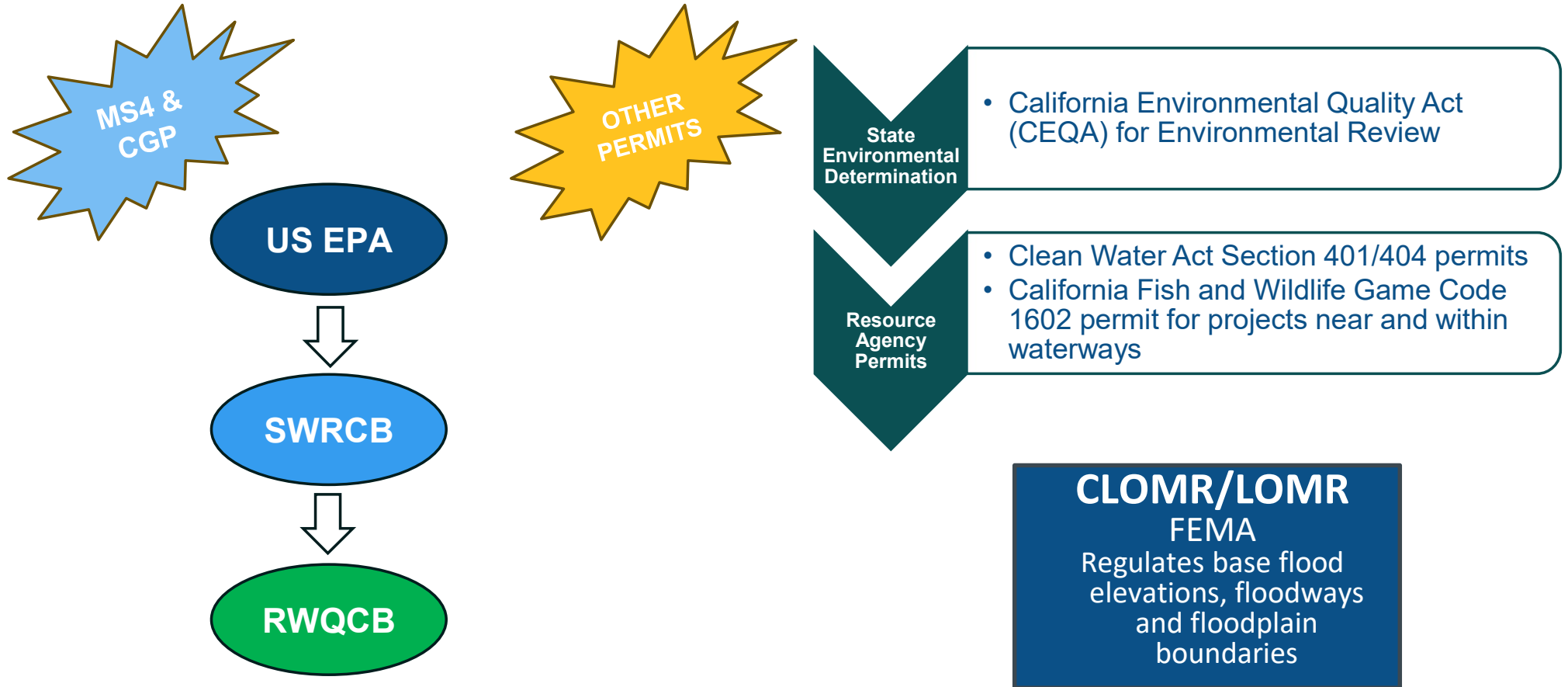
Typical Permitting Timeline



Summary



Permit Recap



Questions & Answers



Contact Us

stormwater@apwa-sd.net



Post-Seminar Survey

Thank you for your participation in today's seminar. Please scan the QR code to complete a quick survey.



Networking Event



World Famous Stormwater Networking Session



Game Rules: Find someone new to talk to, see if you match on any topic, come grab a raffle ticket, and you'll be entered to win a prize!

Example Stormwater Match Topics:

- Favorite BMP To Design
- Least Favorite BMP To Detail
- Similar Role (Public or Private)
- Worst Utility Conflict Story
- Best Go-To Green Street Element
- Most Confusing Permit

Example Fun Match Topics:

- Favorite San Diego Hobby
- Padres: World Series or Doomed?
- Favorite San Diego Beach with Parking
- Best Taco Shop Order
- Favorite Neighborhood
- Best Coffee Shop or Brewery

Networking Coordinator: Osmar Rodriguez, PE/QSD (Parsons)

Thank You

