

# HARRIS & ASSOCIATES

PROFESSIONAL SERVICES



Harris & Associates



**APWA**  *San Diego & Imperial Counties Chapter*  
**AMERICAN PUBLIC WORKS ASSOCIATION**



50 Years  
 Total Employees: 300+  
 Total Offices: 9



San Francisco Chronicle  
 The San Diego Union-Tribune  
 THE ORANGE COUNTY REGISTER

## OFFICE LOCATIONS

- **CALIFORNIA**

- NorCal

- Sacramento
    - Concord
    - Salinas

- SoCal

- San Diego
    - Irvine
    - Temecula
    - Los Angeles

- **WASHINGTON** - Seattle

- **NEVADA** - Las Vegas



# OUR INTEGRATED SERVICES

END-TO-END VALUE IN WATER, TRANSPORTATION, MUNICIPAL, EDUCATION

**PLANNING**

**FUNDING  
STRATEGIES**

**DESIGN +  
ENGINEERING**

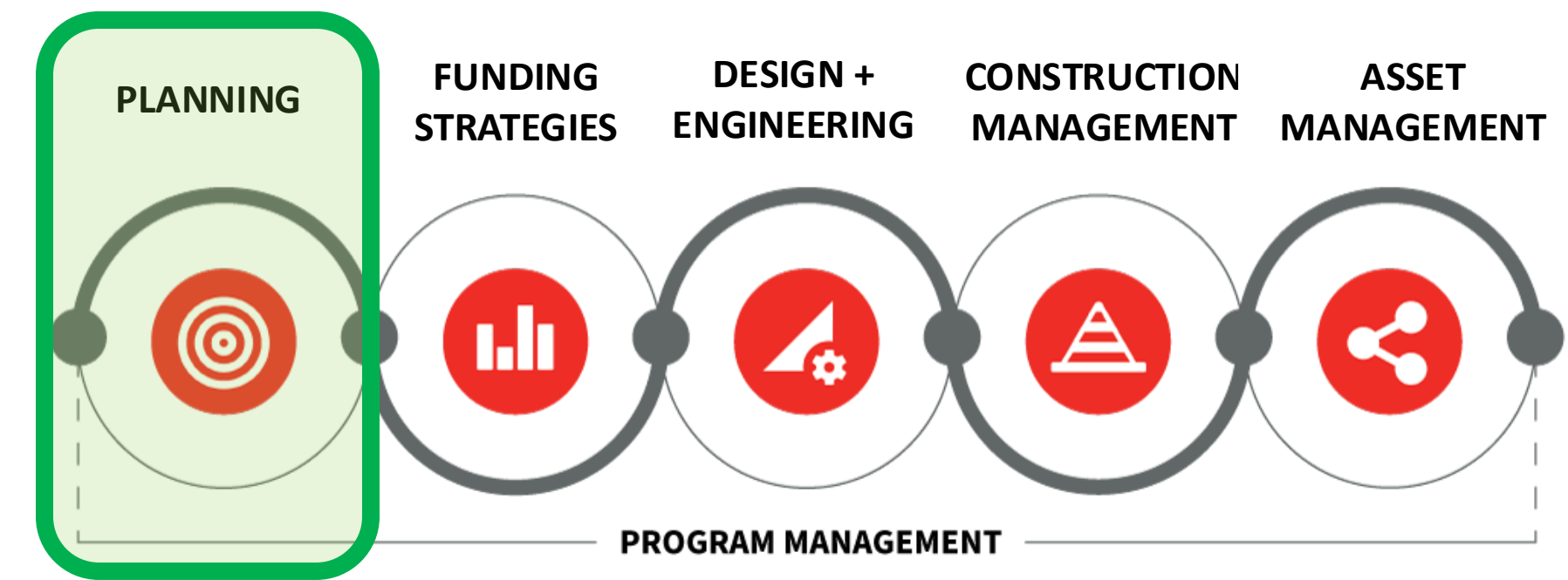
**CONSTRUCTION  
MANAGEMENT**

**ASSET  
MANAGEMENT**



**PROGRAM MANAGEMENT**

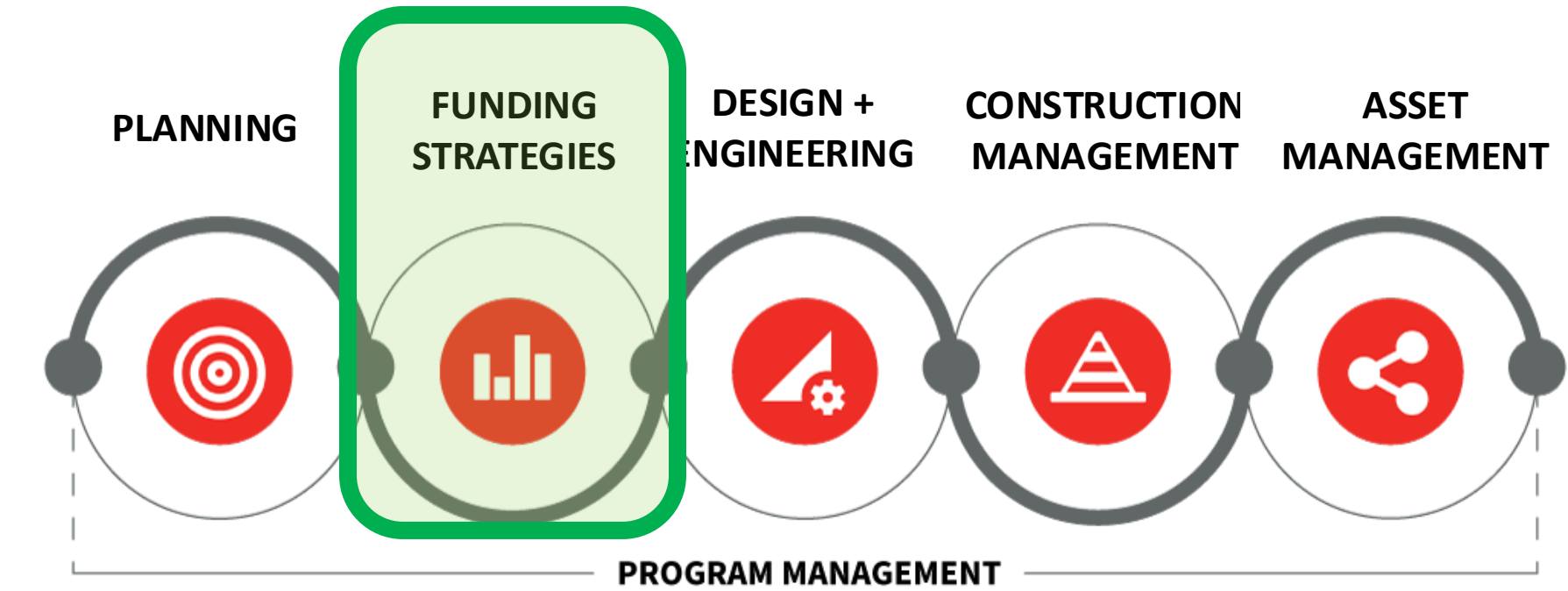
# PLANNING



- Strategic Planning
  - Multi Year Citywide Capital Improvement Plans
  - Asset Specific Master Plans
- General Plans and Updates
- Climate Action and Sustainability Plans
- Long Range Development Plans
- Land Use Planning



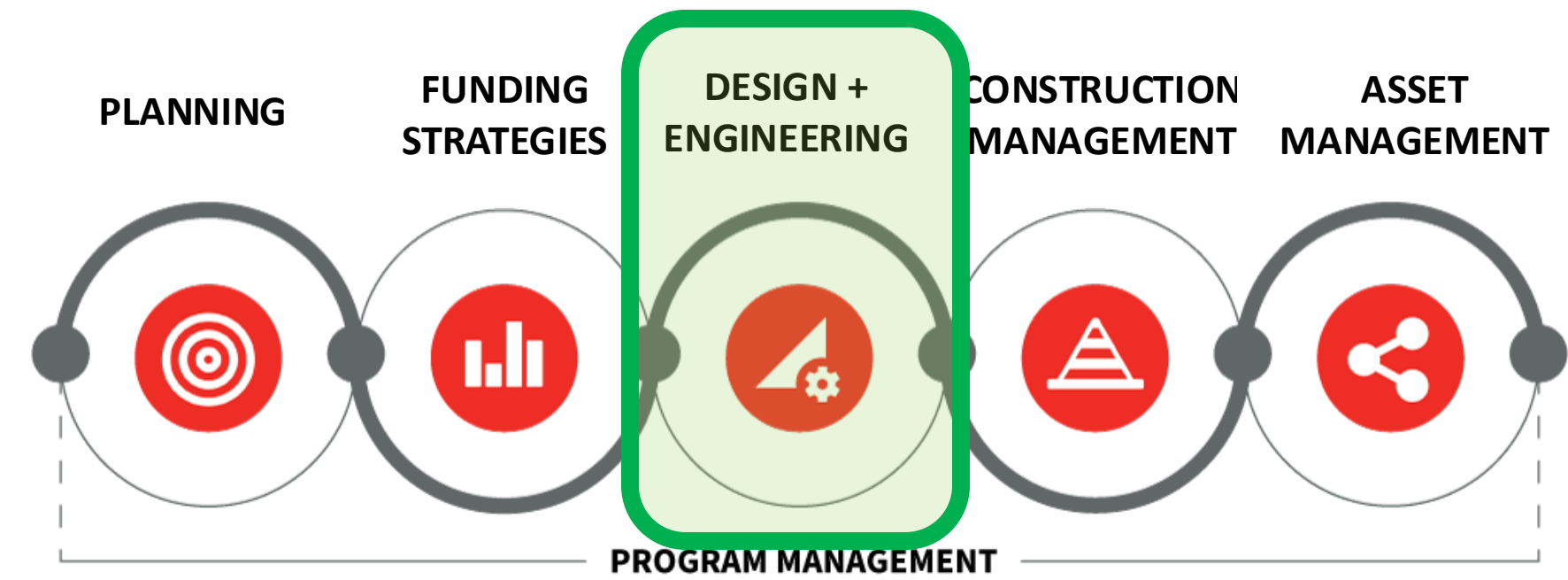
# FUNDING STRATEGIES



- Municipal finance
- Grants Acquisition and Management
- Development Impact Fees
- Public Facilities Financing Plans
- Revenue analysis
- Enhanced infrastructure financing districts
- Cost of Service Studies
- Rate Studies



# DESIGN AND ENGINEERING





*La Jolla Country Club Pump Station & Reservoir Replacement – City of San Diego*



*Pipeline Upgrade Project No. 2 – Rainbow Municipal Water District*



*Imperial Ave / Big Sky Lane Water Main Replacement – City of Anaheim*



# Sewer



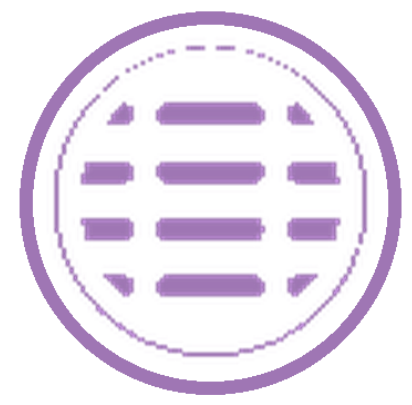
*Glorietta Bay Pump Station Improvements –  
City of Coronado*



*G Street Pump Station Force Main –  
City of Chula Vista*



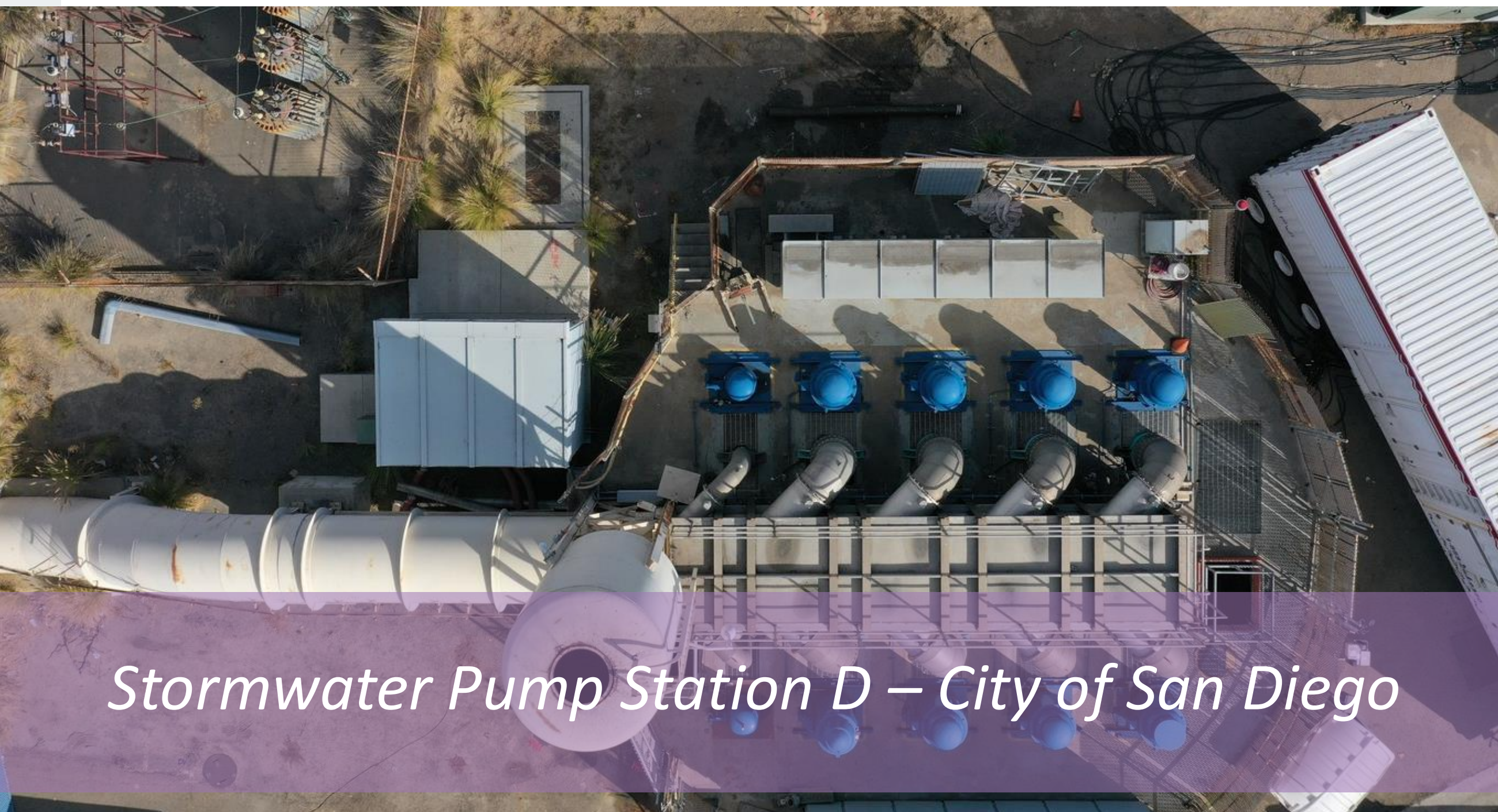
*Eucalyptus Citrus Sewer Improvements –  
City of Vista*



# Stormwater



*Monte Mar Storm Drain Improvements –  
City of Vista*



*Stormwater Pump Station D – City of San Diego*



*Villa La Jolla Dr 144" Storm Drain Emergency  
Repair – City of San Diego*



# Transportation



*Pacific Coast Highway @ Hawthorne Blvd  
Improvements – City of Torrance*

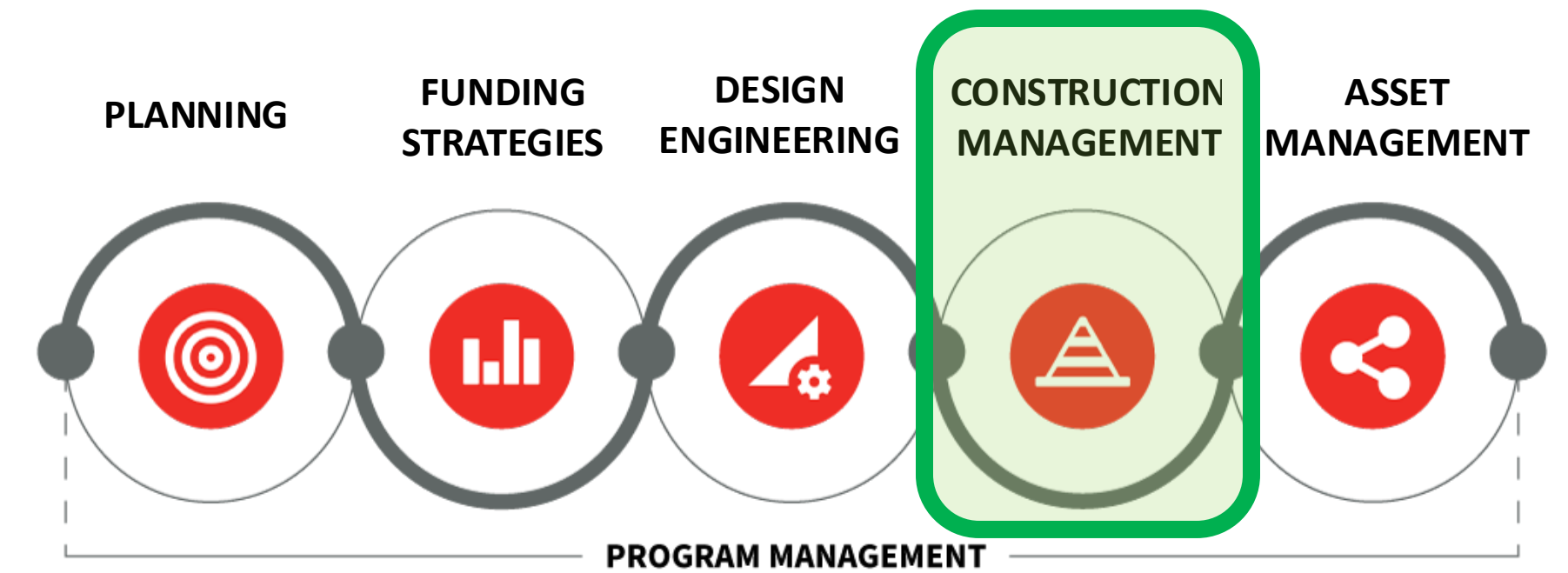


*Oak View Streetscape Project –  
City of Huntington Beach*



*Esplanade Streetscape Project –  
City of Redondo Beach*

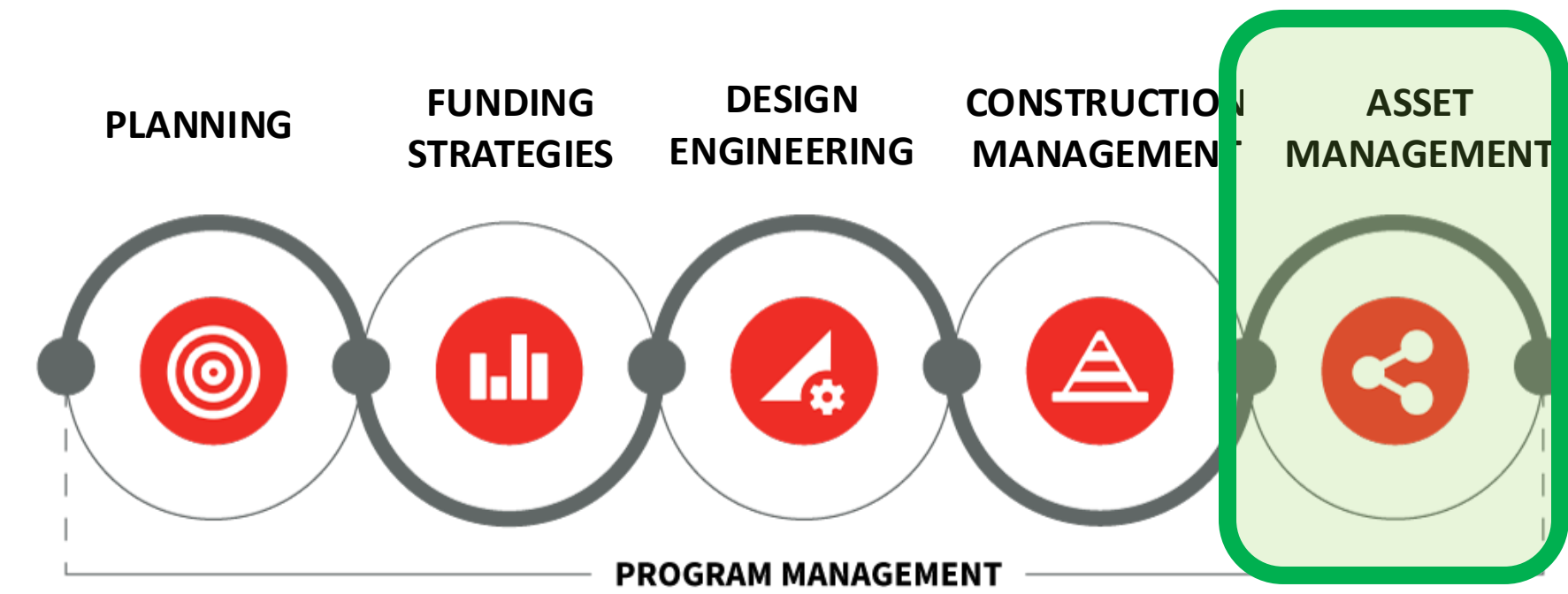
# CONSTRUCTION MANAGEMENT



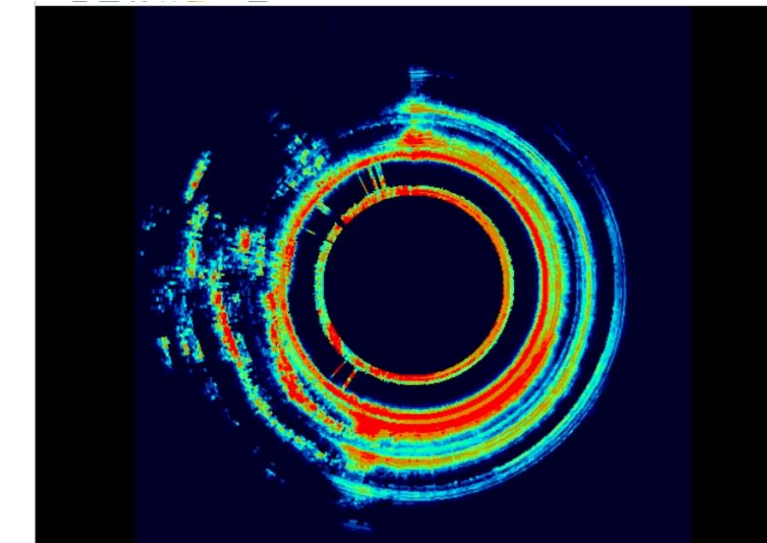
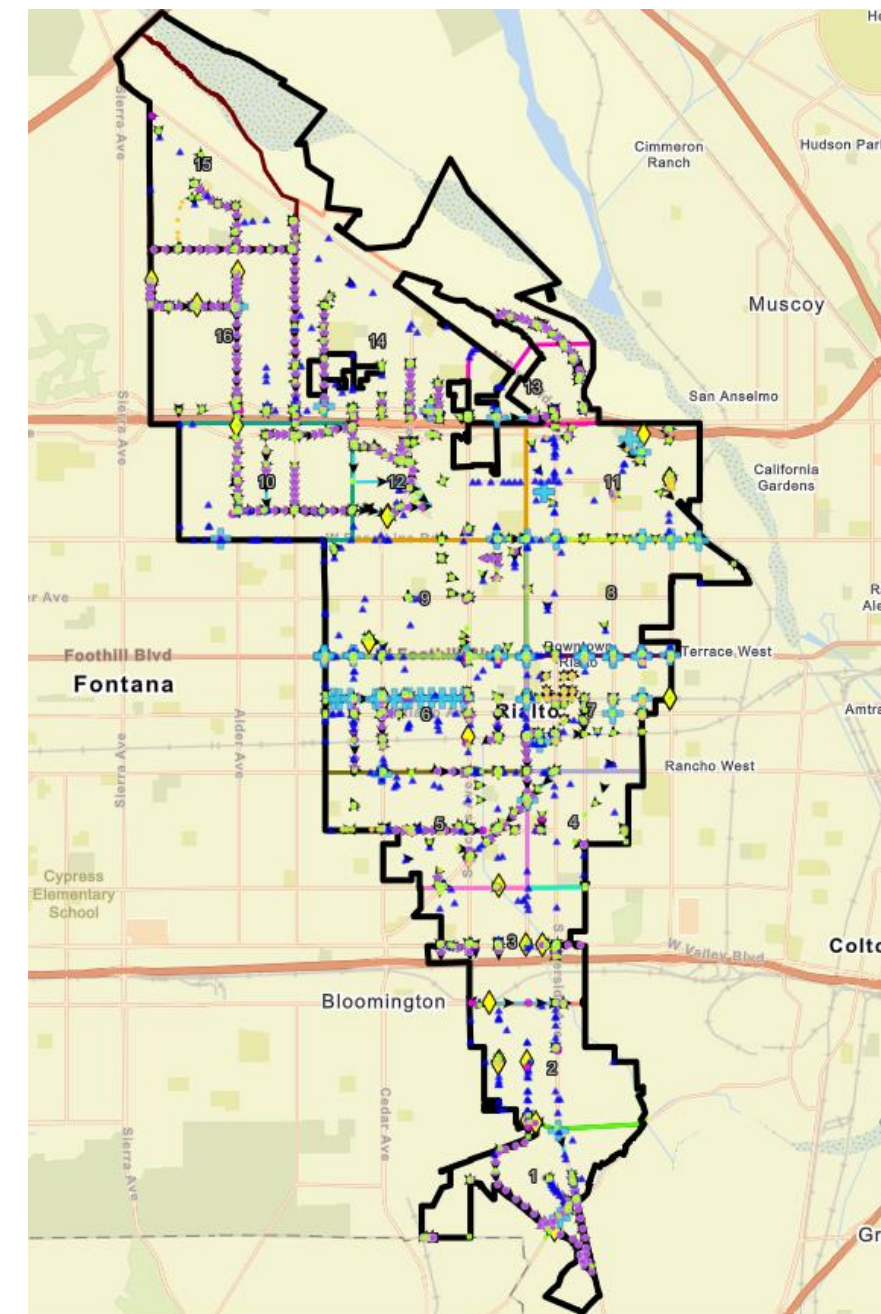
- Roadways
- Rails
- Bridges
- Pipelines
- Pump Stations
- Buildings
- Parks



# ASSET MANAGEMENT



- Lifecycle planning
  - Pavement Networks
  - Water Systems
  - Stormwater Systems
- Asset Inventory
- Condition Assessments
- GIS Specialists



**POLICY AND PLANNING**      **FUNDING AND PERMITTING STRATEGIES**      **DESIGN AND ENGINEERING**      **CONSTRUCTION MANAGEMENT**      **ASSET MANAGEMENT**



- CEQA/NEPA documentation & environmental review
- Permitting strategy and regulatory coordination
- Technical studies (GHG, air quality, noise, biology)
- Mitigation, compliance, and construction support





# THANK YOU

APWA SAN DIEGO  
CHAPTER LUNCHEON

Who we are:  
Harris & Associates  
[www.WeAreHarris.com](http://www.WeAreHarris.com)

