



CITY OF CORONADO

Coronado's Wastewater System

April 9, 2026

Overview:

- City incorporated in 1890, approximate 20,000 residents
 - Fourth of July typically hosts over 100,000 people
- City is a member of the Metro Joint Powers Authority
 - Point Loma Treatment Plant
 - City of San Diego Pump Station #2
- Water service provided by California American Water
 - Not part of San Diego County Water Authority
 - Private water company, fall under CA Public Utilities Commission
- Last wastewater rate increase 7/1/2018
 - Council approved Proposition 218 Notice for 5 Year Rate increase of 8.5% annually



City of Coronado Sewer Pump Stations, Basins, and Force Main



1. North Beach Restroom Station
2. Central Beach Restroom Station
3. Lifeguard Tower Station
4. Lifeguard Services Building
5. 5th Green Restrooms Station
6. Golf Course Maintenance Shed
7. Golf Course Clubhouse Station
8. 14th Tee Station



Gravity Miles (approx.)	40
Force Main Miles (approx.)	7
Number of Sanitary Pump Stations	17

Parker Pump Station Replacement



Existing Station

New Stormwater Station

New Wastewater Station

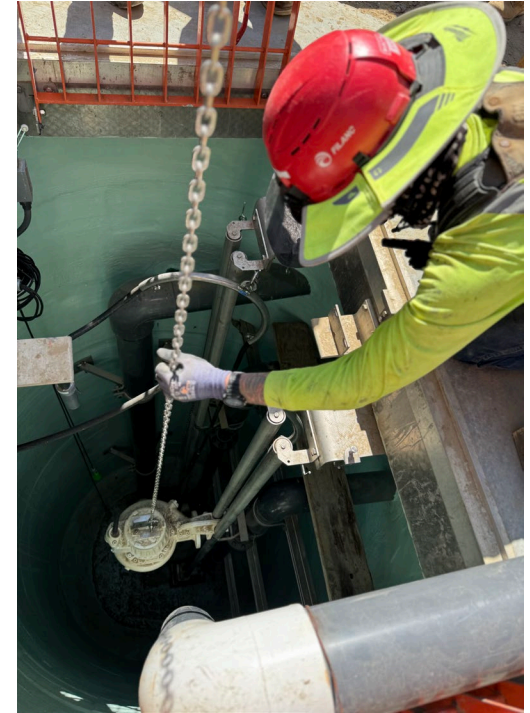
New Control Building



Parker Pump Station Replacement



Sep 22, 2025 10:17:36 AM
Duffer Lane
Coronado
San Diego County
California





THANK YOU!