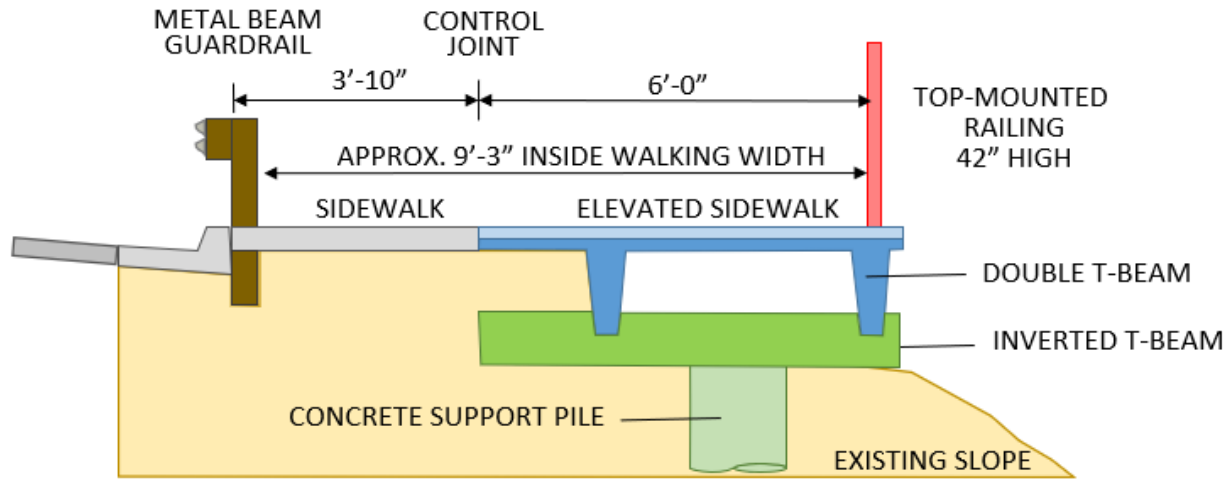
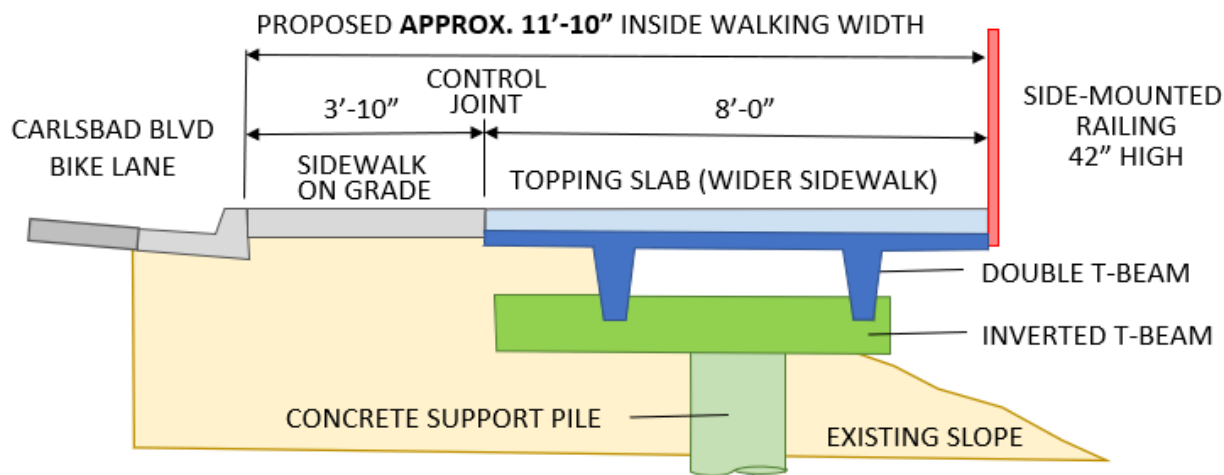


# Carlsbad Beach Access Repairs Project Overview

*Replacing 1,087 feet of elevated pile-supported upper sidewalk and overlooks between Pine Ave and Maple Ave, and repairing various sections of the on-grade sidewalk south of Maple Ave*



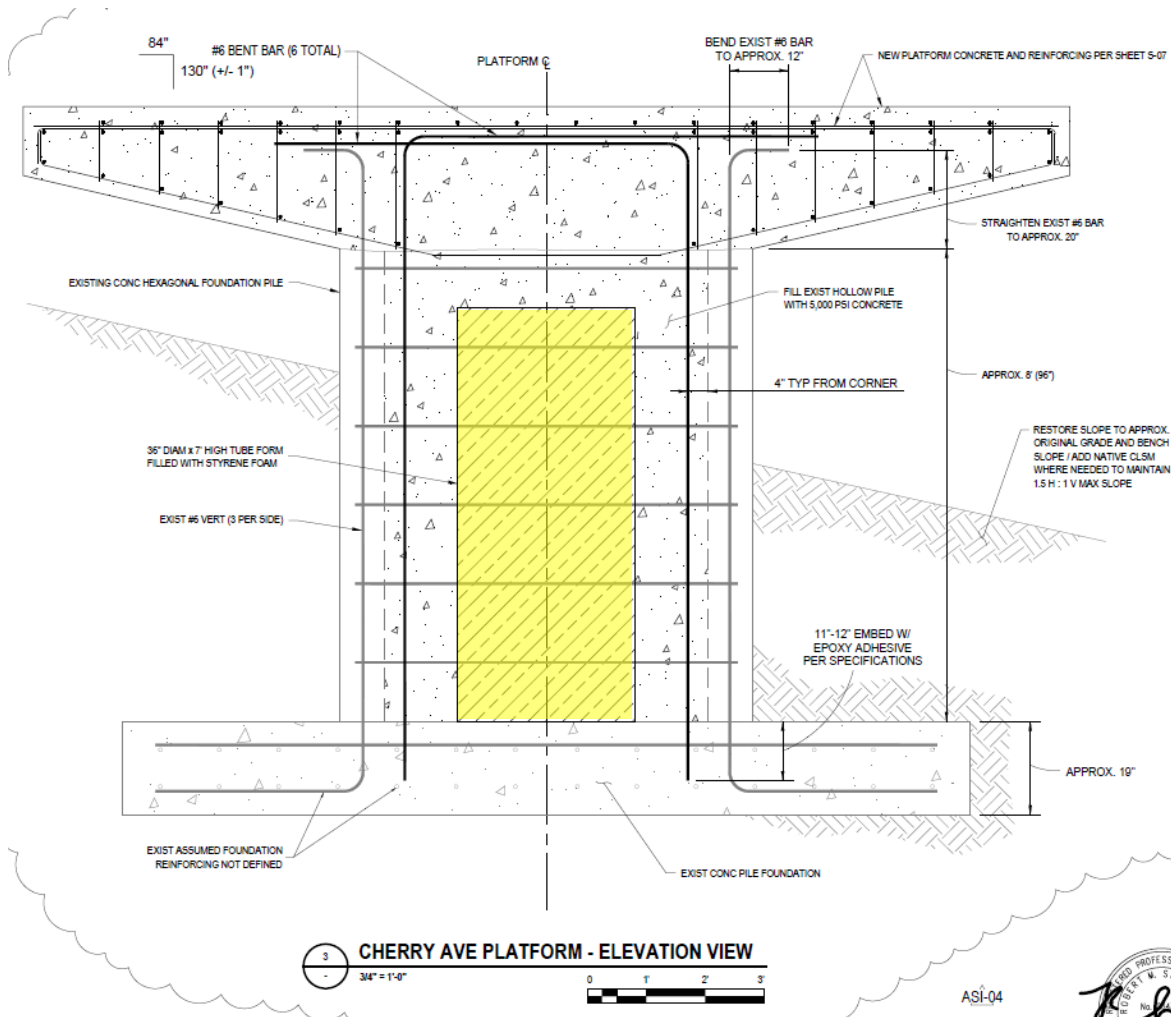
## Elevated Upper Sidewalk Widening Pine Avenue to Maple Avenue



- Reusing existing support piles
- Removal of metal beam guardrail
- Widening of elevated walk by 1.5'
- Moving railing to side of walkway
- Thickening of elevated walkway section to give more concrete cover for corrosion / marine concrete mix
- Replacement of existing streetlights

# Carlsbad Beach Access Repairs Project Overview

*Cherry Ave platforms built before 1988 City Beach Access Project and no as-builts available from City or State Parks; required post-demolition evaluation / excavation of slope for foundation dimensions*



PROFESSIONAL ENGINEER  
ROBERT W. STR...  
No. 2135

# Beach Access Repairs Project

Along Carlsbad Blvd (Pine Ave to Tamarack Ave)



(w/ Unique Challenge Examples)

Oak Ave

Pine Ave

Walnut Ave

Sycamore Ave

Chestnut Ave

Maple Ave

Acacia Ave

Cherry Ave

Juniper Ave

Hemlock Ave

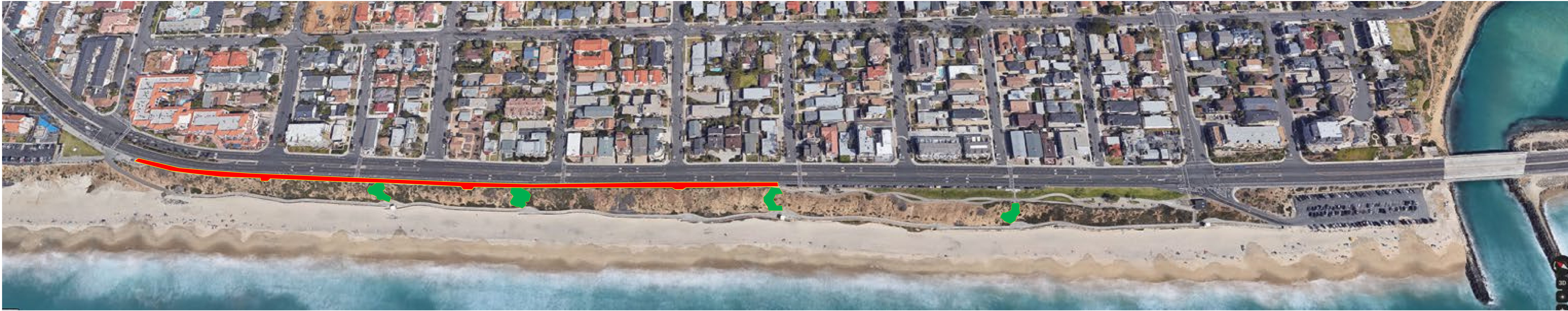
Redwood Ave

Tamarack Ave

Sequoia Ave

Chinquapin Ave

Aqua Hedionda Lagoon



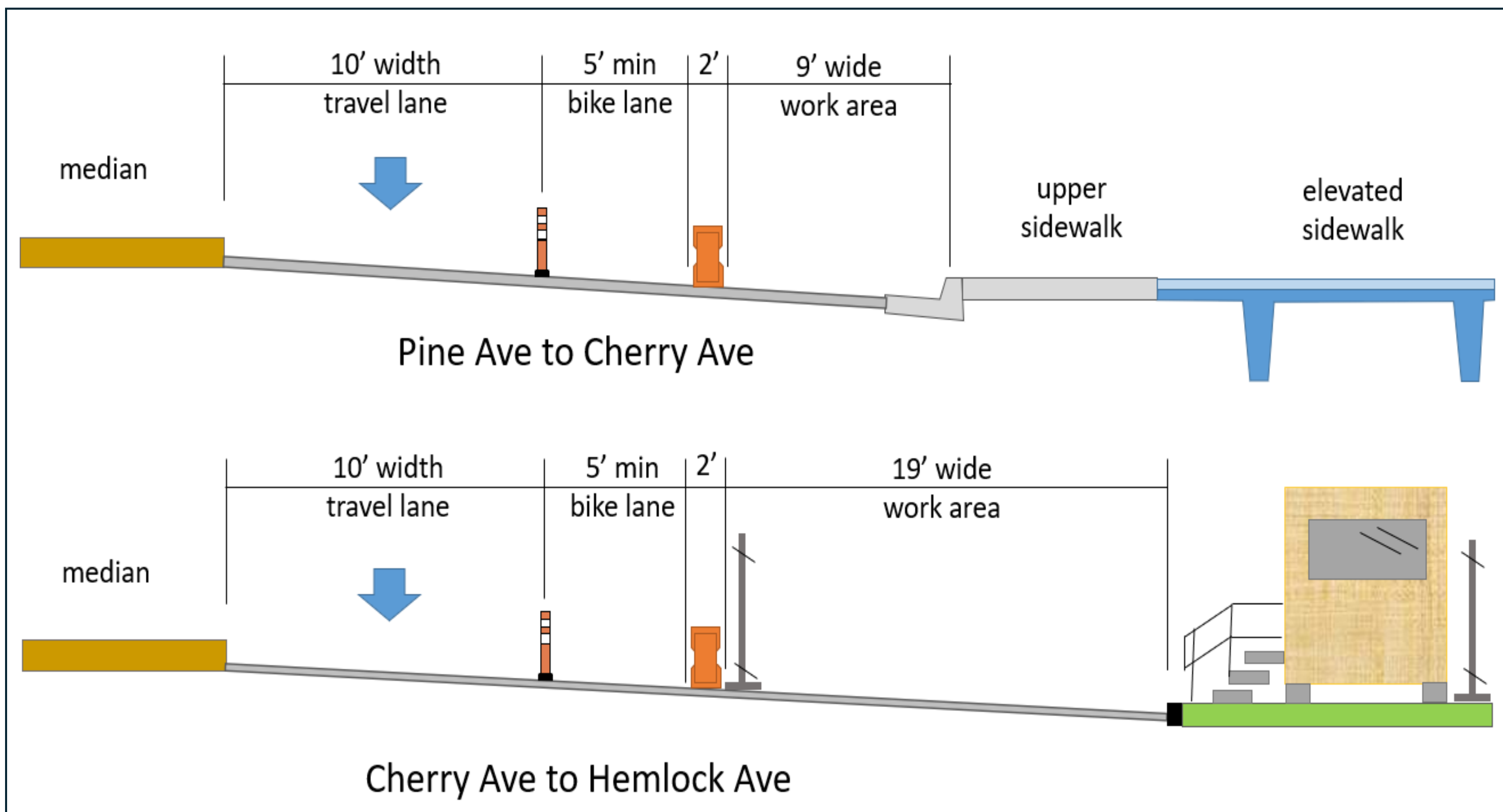
Source: Google Earth Pro



Stairway Replacement



Upper Sidewalk Repairs



Unique Challenge #1  
Maintaining Access / Phasing

Unique Challenge #2  
Cherry Ave Landings

Unique Challenge #3  
Concrete Strip / Railing